

D-Series Size 1 LED Area Luminaire

Specifications:

- EPK: 0.00 ft (0.00 m)
- Length: 14.25" (361 mm)
- Width: 14.25" (361 mm)
- Height H1: 7.80" (198 mm)
- Height H2: 2.73" (69 mm)
- Weight: 34 lbs (15 kg)

Introduction: The modern styling of the D-Series features a highly refined aesthetic that blends seamlessly with its environment. The D-Series offers the benefits of the latest in LED technology into a high performance, high efficacy, long-life luminaire.

The photometric performance results in sites with excellent uniformity, greater pole spacing and lower power density. D-Series outstanding photometry aids in reducing the number of poles required in area lighting applications with typical energy savings of 65% and expected service life of over 100,000 hours.

Ordering Information: EXAMPLE: DSX1 LED P7 40K 70CRI T3M MVOLT SPA NLTAR2 PIRHN DDXB

Level	Qty	Color Temperature	Color Rendering Index	Mounting	Height	Notes
DSX1 LED	3	4000K	90	70CRI	120V	120V

Commercial Outdoor

CYL-UPDN Up/Down Cylinder Luminaire

Project: _____
Type: _____
Catalog #: _____

STANDARD: ENEC, FCC, RoHS, UL, IEC

FEATURES:

- Available in 3000K (warm white), 4000K (neutral white), and 5000K (cool white) color temperatures.
- Long-life LEDs provide up to 153,000 hours of operation with at least 70% of initial lumen output (L70).
- CYL-UPDN provides a range of 2.448 to 2.509 nominal lumens and 82 lumens per watt (lm/W).
- Internal switch allows a choice of down light or up/down light.
- 120 AC voltage (50/60Hz) is standard.
- Power factor > 0.90.
- Color rendering index > 80.
- Aluminum housing and glass lenses.
- Dark bronze power coat finish.
- Easy installation in new construction or retrofit.

WARRANTY & LISTINGS:

- ETLus listed for wet locations.
- Energy Star qualified.
- Complies with FCC Part 15, Class B.
- Complies with ENEC 1000-4-5 surge immunity protection (1kV).
- RoHS compliant.
- 5-year warranty of all electronics and housing.

ORDERING INFORMATION: Example: CYL-UPDN-2L-3K-120V

Series	Nominal Lumen Output	Color Temperature	Voltage
CYL-UPDN	2L	3K	120V
		4K	120V
		5K	120V

Dimensions: Diameter: 4.3", Height: 11.8", Weight: 2.7 lbs.

LITHONIA LIGHTING

FEATURES & SPECIFICATIONS:

NOTES:

- These specifications are for standard only. Super Bright LEDs are a general purpose light for up to 30-foot mounting heights. The pole provides a rigid and sturdy support system for lighting applications.
- CONSTRUCTION:** Pole shaft is of aluminum alloy and is made of extruded 6061-T6 aluminum alloy. The shaft is 1.5 inches in diameter and has a wall thickness of 0.063 inches. The shaft is anodized clear and has a clear coat finish. The pole shaft is galvanized steel with a minimum coating thickness of 0.0075 inches.
- ANCHOR BASE POLES:** Anchor base poles are made of 304 stainless steel and are equipped with 4 anchor bolts. The anchor bolts are 1/2 inch in diameter and 6 inches long. The anchor bolts are spaced 18 inches apart.
- FINISH:** The pole is finished with a clear coat finish. The pole is finished with a clear coat finish. The pole is finished with a clear coat finish.
- WARRANTY:** 5-year warranty of all electronics and housing.

Anchor Base Poles

SSA SQUARE STRAIGHT ALUMINUM

Scale: 1" = 20'

GENERAL NOTES:

- THESE PLANS ARE BASED ON THE ALTA/NSPS LAND TITLE AND TOPOGRAPHIC SURVEY (SURVEY PROJECT #21-22354 DATED 08/16/2021) PREPARED BY: GENTILE AND ASSOCIATES, INC. 550 E. ST. CHARLES PLACE, LOMBARD, ILLINOIS 60148 (630) 916-6262
- ALL RADIUS DIMENSIONS ARE TO BACK OF CURB.
- SEE ARCHITECTURAL PLANS FOR EXACT BUILDING DIMENSIONS.
- ALL STRIPING TO BE DOUBLE COATED 4" YELLOW PAINT UNLESS OTHERWISE NOTED.
- WHERE PEDESTRIANS HAVE TO CROSS A TAPERING RAMP OR CURB RAMP THE FACE AND TOP OF CURB ARE TO BE PAINTED USING YELLOW, SLIP RESISTANT PAINT.

QUANTITIES

FIXTURE TYPE:	SYMBOL	QUANTITY
DSX1 LED P7 40K 70CRI T3M EGS (POLE MOUNTED)	☒	3
DSX1 LED P7 40K 70CRI T3M EGS (BUILDING MOUNTED)	☒	4
IES-CYL-UPDN-2L-3K-120V-26-Nov-2019 (DECORATIVE BUILDING MOUNTED)(6'-8" MOUNTING HEIGHT)	☒	9
DSX1 LED P7 40K 70CRI T3M HS (POLE MOUNTED)	☒	1
SSA 23 5G (POLE COLOR, MOUNTING, ETC TO BE SELECTED BY OWNER. FIXTURE SUPPLIER TO DETERMINE IF POLE IS COMPATIBLE WITH FIXTURE)	●	4

PHOTOMETRIC SUMMARY

VEHICULAR USE AREA:

AVERAGE	1.6
MAXIMUM	4.1
MINIMUM	0.1
AVG/MIN	16.0:1

- NOTES:**
- THE FOOTCANDLE LEVELS AS SHOWN ARE BASED ON THE CRITERIA SHOWN IN THE "QUANTITIES" NOTE, LOCATED ON THIS SHEET. ANY SUBSTITUTIONS IN SPECIFIED FIXTURES OR CHANGES TO LAYOUT WILL AFFECT LIGHTING LEVELS SHOWN AND WILL NOT BE THE RESPONSIBILITY OF WATERMARK ENGINEERING RESOURCES, LTD.
 - MOUNTING HEIGHT OF FIXTURES = 25'. MOUNTING HEIGHT INCLUDES A 2' HIGH CONCRETE BASE, TO BE PROVIDED BY THE CONTRACTOR AS PART OF THIS PLAN, AND A 23' HIGH POLE.
 - DISTANCE BETWEEN READINGS 10'
 - FOOTCANDLE LEVELS SHOWN ARE MAINTAINED. MAINTENANCE FACTOR USED ON THIS DRAWING IS 1.00
 - FINAL ADJUSTMENTS TO AIMING ANGLE/DIRECTION OF FIXTURES MAY BE REQUIRED TO ELIMINATE LIGHT TRESPASS OR GLARE ON ADJOINING PROPERTIES OR ROADWAYS.
 - HOUSE SIDE SHIELDS ARE NOT ALWAYS ABLE TO BE MODELED DUE TO THE UNAVAILABILITY OF THE PROPER IES FILES. IN THESE INSTANCES OTHER MANUAL ACCOMMODATIONS MAY BE MADE DURING THE MODELING PROCESS TO SIMULATE CUT OFF AT PROPERTY LINES OR ELSEWHERE.
 - CONTRACTOR TO VERIFY PROPER ORDERING INFORMATION INCLUDING BUT NOT LIMITED TO, VOLTAGE AND MOUNTING. PRIOR TO ORDERING OR INSTALLING SPECIFIED LUMINAIRES AND/OR POLES. ALL LIGHT FIXTURES TO BE FULL CUT OFF.
 - LOCATE WALL PACKS AS NOTED, CONTRACTOR SHALL FIELD ADJUST MOUNTINGS ON BUILDING TO DETERMINE A UNIFORM HEIGHT AND SPACING. WALL PACKS SHALL BE PLACED IN A SYMMETRICAL PATTERN TO MATCH BUILDING ARCHITECTURE AND FINAL LOCATION SHALL BE VERIFIED WITH THE ARCHITECT PRIOR TO INSTALLATIONS.
 - ALL LIGHTING INSTALLATION AND ASSOCIATED WORK SHALL MEET BUILDING AND ELECTRICAL CODE.
 - CONTRACTOR IS RESPONSIBLE TO VERIFY AND CONFIRM MATERIALS AND LABOR FOR ALL ELECTRICAL, CONDUIT, SLEEVES, CONCRETE FOUNDATIONS, POLES, LUMINAIRES, AND ALL NECESSARY PARTS FOR PROPER LIGHTING INSTALLATIONS. ALL PROPOSED LIGHTING WORK SHALL NOT INTERFERE OR INTERRUPT EMERGENCY INGRESS AND EGRESS LIGHTING FIXTURES OR SECURITY SYSTEMS.
 - PROPOSED LIGHTING SHALL INCLUDE PHOTOCELL ON/OFF SWITCHING. CONTRACTOR TO VERIFY IF ANY LIGHTS NEED MANUAL OR WIRELESS ON/OFF SWITCHES WITH OWNER'S REPRESENTATIVE.
 - THIS PLAN IS FOR LIGHTING PERFORMANCE. ALL MEANS, METHODS, AND ASSOCIATED EQUIPMENT IS THE RESPONSIBILITY OF THE INSTALLER TO DETERMINE AND AT THEIR DISCRETION. ALL INSTALLATIONS SHALL BE COMPLETE AND FINISHED. ANY GAPS OR EXPOSED MOUNTINGS WILL BE REJECTED.
 - ALL PROPOSED CONDUIT AND WIRE SERVICES SHALL BE CONCEALED AND HIDDEN SO AS NOT TO BE SEEN OR VISUALLY NOTICEABLE. FINAL LOCATION SHALL BE APPROVED BY OWNER'S REPRESENTATIVE PRIOR TO INSTALLATION.
 - ALL PAINTING NEEDS SHALL BE DONE BY A PROFESSIONAL COLORIST AND TYPES OF PAINT SHALL MATCH ACCORDINGLY TO ADJACENT COLORS AND MATERIALS. VERIFY AND COORDINATE WITH OWNER'S REPRESENTATIVE ALL WORK.
 - ALL RESTORATION SHALL BE DONE TO THE SATISFACTION OF THE OWNER AT NO CHARGE OR EXPENSE TO THE OWNER.
 - WHETHER NOTED ON THE PLANS OR NOT ALL ASSOCIATED WORK WITH THE PHOTOMETRIC PLAN INSTALLATION AND CONSTRUCTION SHALL BE THE RESPONSIBILITY OF THE CONTRACTOR TO PROVIDE AND INSTALL AS NEEDED.
 - CONTRACTOR SHALL FIELD ADJUST BASED ON ELECTRICAL SUPPLY AND PROVIDE WIRING AS NEEDED FOR PROPER INSTALLATION. IF NEEDED, CONTRACTOR SHALL CONSULT AN ELECTRICAL ENGINEER.
 - CONTRACTOR RESPONSIBLE FOR ALL LUMINAIRE INSTALLATIONS, REPLACEMENTS, CONSTRUCTION REMOVALS AND DISPOSALS.
 - CONTRACTOR SHALL FIELD ADJUST AS APPROVED BY OWNER. CONTRACTOR SHALL COORDINATE WITH OWNER'S REPRESENTATIVE FOR ALL RESTORATION OR FABRICATIONS NEEDS. SHOP DRAWINGS OR MATCH UPS MAYBE NECESSARY FOR APPROVALS PRIOR TO INSTALLATIONS. VERIFY AS NEEDED.
 - ANY FABRICATIONS SHALL BE DONE WITH NON-CORROSIVE EXTERIOR GRADE MATERIALS AND FINISHES TO PROTECT BUILDING FROM ANY STAINING.

PHOTOMETRIC PLAN

1 of 1

SAFA PROPERTY, LLC
8060 Lawndale
Skokie, IL

USMANIA PRIME
855 E. Roosevelt Road
Lombard, Illinois

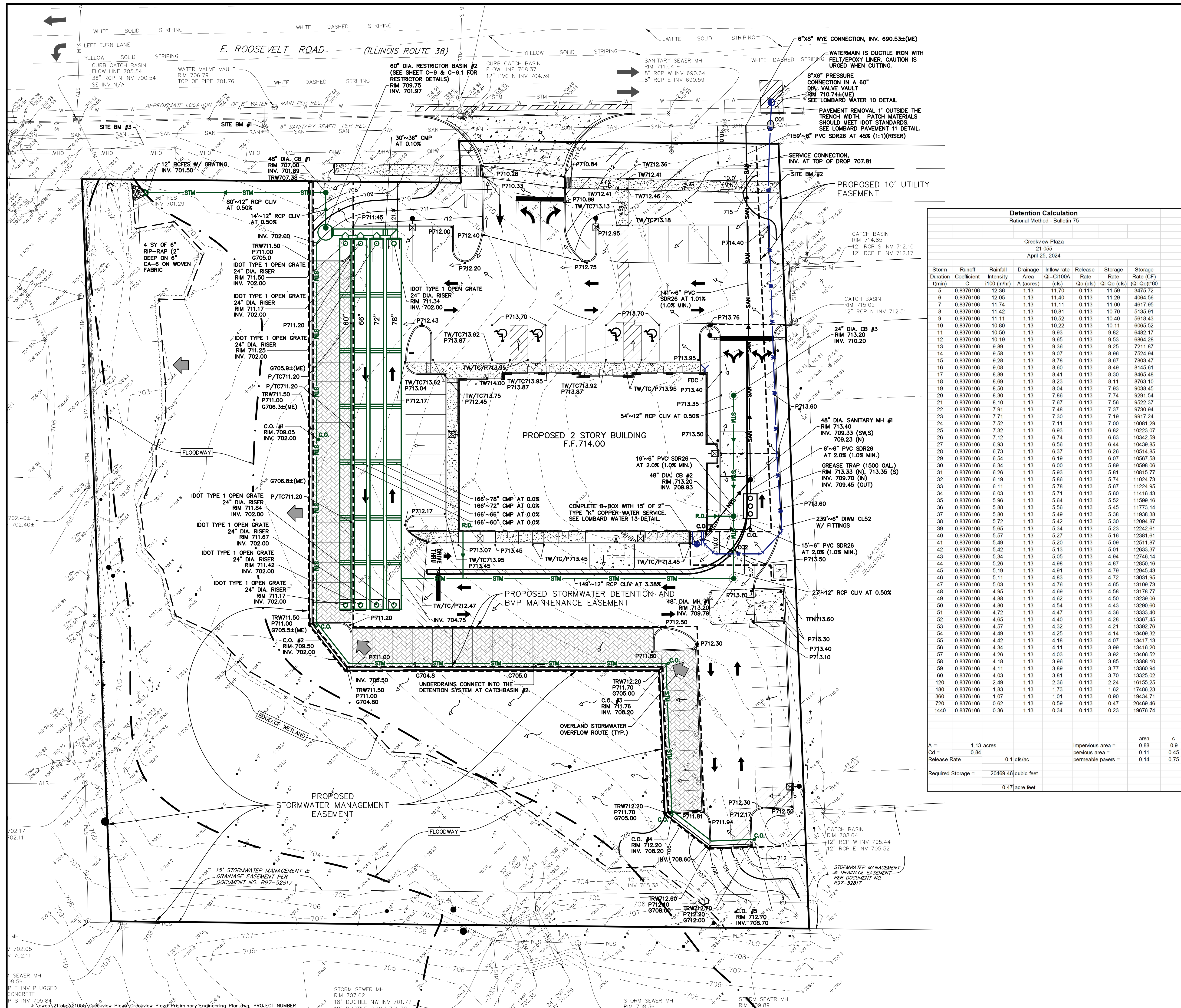
Watermark Engineering Resources
watermark-engineering.com | 2631 Ginger Woods Pkwy | Aurora, IL 60502 | (630) 375-1800

PROJECT NO.: 21-055

PHOTOMETRIC PLAN

CHECKED BY: J. MILLER
DESIGN BY: J. MILLER
DRAWN BY: JOSH MILLER
DATE: APRIL 23, 2024
SCALE: 1" = 20'

DATE: 04/23/2024
REVISIONS:
NEW BUILDING FOOTPRINT



- GENERAL NOTES:**
- THESE PLANS ARE BASED ON THE (ALTA/NSPS LAND TITLE AND TOPOGRAPHIC SURVEY) (SURVEY PROJECT #22-22465 REV-2 DATED 07/21/22) PREPARED BY: GENTILE AND ASSOCIATES, INC. 550 E. ST. CHARLES PLACE, LOMBARD, ILLINOIS 60148 (630) 916-6262
 - PRIOR TO CONSTRUCTION, CONTRACTOR TO CONTACT THE DESIGN ENGINEER AND ARCHITECT TO VERIFY THAT THEY ARE WORKING FROM THE MOST CURRENT SET OF PLANS AND SPECIFICATIONS.

SOURCE BENCHMARK # 1:
 DUPAGE COUNTY BM. # YK09002 DUPAGE COUNTY BM. # YK09002 STATION IS LOCATED ALONG ADDISON AVENUE, BETWEEN THE ILLINOIS PRAIRIE PATH AND CENTRAL BOULEVARD. STATION IS 21.5 FT SOUTH OF THE CENTERLINE OF CENTRAL BOULEVARD, 54.0 FT EAST OF THE CENTERLINE OF ADDISON AVENUE, 67.0 FT NORTH OF THE CENTERLINE OF THE ILLINOIS PRAIRIE PATH, AND 146.0 FT NORTH OF PARK AVENUE. MONUMENT IS 0.85 FT ABOVE THE ROAD SURFACE AND IS FERROMAGNETIC.

SOURCE BENCHMARK # 2:
 DUPAGE COUNTY BM. # YK09003 DUPAGE COUNTY BM. # YK09003 STATION IS LOCATED ALONG HARVARD AVENUE, BETWEEN ITS INTERSECTION WITH CENTRAL BOULEVARD AND ITS INTERSECTION WITH PARK AVENUE. STATION IS 15.4 FT EAST OF THE CENTERLINE OF HARVARD AVENUE, 89.5 FT NORTH OF THE CENTERLINE OF PARK AVENUE, AND 79.5 FT SOUTH OF THE CENTERLINE OF CENTRAL BOULEVARD. MONUMENT IS 1 FT BELOW GRADE OF GROUND AND IS FERROMAGNETIC.

SITE BENCHMARK # 1:
 TAG BOLT ON FIRE HYDRANT LOCATED ON THE SOUTH SIDE OF E. ROOSEVELT ROAD (ILLINOIS ROUTE 38), THE MOST WESTERLY FIRE HYDRANT IN FRONT OF SUBJECT PROPERTY.

SITE BENCHMARK # 2:
 CROSS CUT IN EAST-WEST CONCRETE WALK SOUTH SIDE OF ROOSEVELT ROAD, NEAR NORTHWEST CORNER OF SUBJECT PROPERTY OF SUBJECT PROPERTY.

SITE BENCHMARK # 3:
 CROSS CUT IN EAST-WEST CONCRETE WALK SOUTH SIDE OF ROOSEVELT ROAD, NEAR NORTHWEST CORNER OF SUBJECT PROPERTY OF SUBJECT PROPERTY.

Detention Calculation
 Rational Method - Bulletin 75

Creekview Plaza
 21-055
 April 25, 2024

Storm Duration (min)	Runoff Coefficient	Rainfall Intensity (in/hr)	Drainage Area (acres)	Inflow rate (cfs)	Release Rate (cfs)	Storage Rate (CF)	Storage Rate (CF)
				Qi-C100A	Qo (cfs)	Qi-Qo (cfs)	(Qi-Qo)T60
5	0.876106	12.36	1.13	11.70	0.113	11.59	3475.72
6	0.876106	12.05	1.13	11.40	0.113	11.29	4064.56
7	0.876106	11.74	1.13	11.11	0.113	11.00	4617.95
8	0.876106	11.42	1.13	10.81	0.113	10.70	5135.91
9	0.876106	11.11	1.13	10.52	0.113	10.40	5618.43
10	0.876106	10.80	1.13	10.22	0.113	10.11	6065.52
11	0.876106	10.50	1.13	9.93	0.113	9.82	6482.17
12	0.876106	10.19	1.13	9.65	0.113	9.53	6864.28
13	0.876106	9.89	1.13	9.36	0.113	9.25	7211.87
14	0.876106	9.58	1.13	9.07	0.113	8.96	7524.94
15	0.876106	9.28	1.13	8.78	0.113	8.67	7803.47
16	0.876106	9.08	1.13	8.60	0.113	8.49	8145.61
17	0.876106	8.89	1.13	8.41	0.113	8.30	8465.48
18	0.876106	8.69	1.13	8.23	0.113	8.11	8763.10
19	0.876106	8.50	1.13	8.04	0.113	7.93	9038.45
20	0.876106	8.30	1.13	7.86	0.113	7.74	9291.54
21	0.876106	8.10	1.13	7.67	0.113	7.56	9522.37
22	0.876106	7.91	1.13	7.48	0.113	7.37	9730.94
23	0.876106	7.71	1.13	7.30	0.113	7.19	9917.24
24	0.876106	7.52	1.13	7.11	0.113	7.00	10081.29
25	0.876106	7.32	1.13	6.93	0.113	6.82	10223.07
26	0.876106	7.12	1.13	6.74	0.113	6.63	10342.59
27	0.876106	6.93	1.13	6.56	0.113	6.44	10439.85
28	0.876106	6.73	1.13	6.37	0.113	6.26	10514.85
29	0.876106	6.54	1.13	6.19	0.113	6.07	10567.58
30	0.876106	6.34	1.13	6.00	0.113	5.89	10598.06
31	0.876106	6.26	1.13	5.93	0.113	5.81	10615.77
32	0.876106	6.19	1.13	5.86	0.113	5.74	10624.73
33	0.876106	6.11	1.13	5.78	0.113	5.67	10624.95
34	0.876106	6.03	1.13	5.71	0.113	5.60	11416.43
35	0.876106	5.96	1.13	5.64	0.113	5.52	11598.16
36	0.876106	5.88	1.13	5.56	0.113	5.45	11773.14
37	0.876106	5.80	1.13	5.49	0.113	5.38	11938.38
38	0.876106	5.72	1.13	5.42	0.113	5.30	12094.87
39	0.876106	5.65	1.13	5.34	0.113	5.23	12242.61
40	0.876106	5.57	1.13	5.27	0.113	5.16	12381.61
41	0.876106	5.49	1.13	5.20	0.113	5.09	12511.87
42	0.876106	5.42	1.13	5.13	0.113	5.01	12633.37
43	0.876106	5.34	1.13	5.06	0.113	4.94	12746.14
44	0.876106	5.26	1.13	4.98	0.113	4.87	12850.16
45	0.876106	5.19	1.13	4.91	0.113	4.79	12945.43
46	0.876106	5.11	1.13	4.83	0.113	4.72	13031.95
47	0.876106	5.03	1.13	4.76	0.113	4.65	13109.73
48	0.876106	4.95	1.13	4.69	0.113	4.58	13178.77
49	0.876106	4.88	1.13	4.62	0.113	4.50	13239.06
50	0.876106	4.80	1.13	4.54	0.113	4.43	13290.60
51	0.876106	4.72	1.13	4.47	0.113	4.36	13333.40
52	0.876106	4.65	1.13	4.40	0.113	4.28	13367.45
53	0.876106	4.57	1.13	4.32	0.113	4.21	13392.76
54	0.876106	4.49	1.13	4.25	0.113	4.14	13409.32
55	0.876106	4.42	1.13	4.18	0.113	4.07	13417.13
56	0.876106	4.34	1.13	4.11	0.113	3.99	13416.20
57	0.876106	4.26	1.13	4.03	0.113	3.92	13406.52
58	0.876106	4.18	1.13	3.96	0.113	3.85	13388.10
59	0.876106	4.11	1.13	3.89	0.113	3.77	13360.94
60	0.876106	4.03	1.13	3.81	0.113	3.70	13325.02
120	0.876106	2.49	1.13	2.36	0.113	2.24	10155.25
180	0.876106	1.83	1.13	1.73	0.113	1.62	17486.23
360	0.876106	1.07	1.13	1.01	0.113	0.90	19434.71
720	0.876106	0.62	1.13	0.59	0.113	0.47	20469.46
1440	0.876106	0.36	1.13	0.34	0.113	0.23	19676.74

STORMWATER MANAGEMENT DATA

WETLAND
 -NO IMPACT

WETLAND BUFFER
 -50' REQUIRED, 19' TO 85' PROPOSED
 -25,321 SF @ 50', 25,365 SF @ PROPOSED

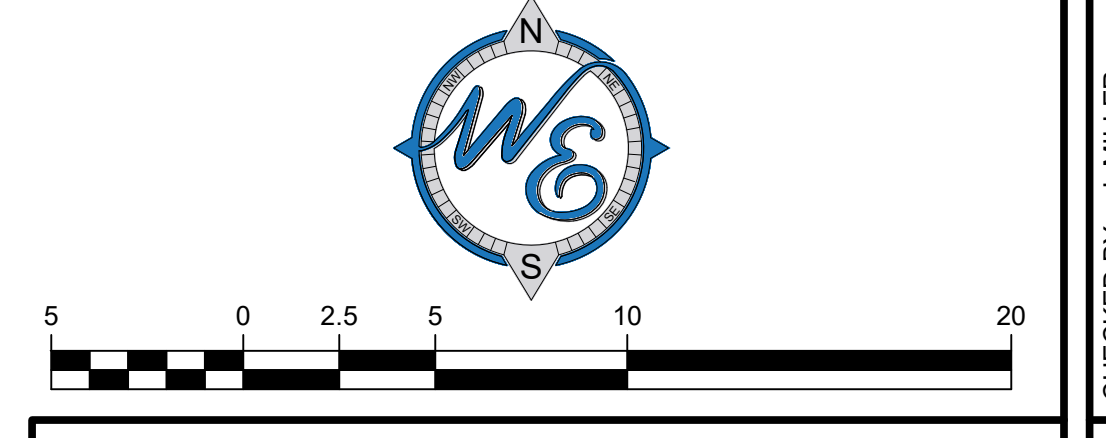
FLOODWAY
 -NO IMPACT

FLOODPLAIN
 100 YR. BFE = 706.6
 10 YR. BFE = 704.8
 0-10 YEAR FILL = 0 ac-ft
 10-100 YEAR FILL = 0.14 ac-ft
 0-100 YEAR FILL = 0.203 ac-ft
 REQUIRED STORAGE (150% OF FILL) = 0.18 ac-ft
 10-100 YEAR CUT = 0.205 ac-ft
 0-100 YEAR CUT (PROVIDED STORAGE) = 0.205 ac-ft
 PROVIDED STORAGE > REQUIRED STORAGE = 0.222 ac-ft > 0.003 ac-ft

SURPLUS VOLUME
 = 0.003 ac-ft

NEW RUNOFF STORAGE
 REQUIRED STORAGE PER RATIONAL METHOD
 -DRAINAGE AREA = 1.13 AC
 -IMPERVIOUS AREA = 1.02 AC
 -REQUIRED STORAGE = 0.47 AC-FT (20,470 CF)
 -STORAGE PROPOSED = 0.48 AC-FT (20,796 CF)
 -0.48 AC-FT ≥ 0.47 AC-FT ∴ OK
 THE PROPOSED STORAGE IS PROVIDED IN OVERSIZED PIPE (17,405 CF) AND THE VOIDS IN THE STONE AROUND THE PIPE (3,391 CF) USING A POROSITY OF 0.30.

WATER QUALITY-PCBMP'S
 THE PERMEABLE PAVERS AND STONE BELOW THE PAVERS WILL PROVIDE THE REQUIRED MITIGATION OF THE NEW IMPERVIOUS AREAS (USING A POROSITY OF 0.30).
 -IMPERVIOUS AREA = 1.02 AC
 -FIRST FLUSH RUNOFF = 1.02*43,560*1.25"/12 = 4,629 CF
 -AREA OF PAVERS = 6,310 SF
 -DEPTH OF STONE UNDER PAVERS = 30"
 -VOLUME PROPOSED = 4,733 CF ≥ 4,629 CF ∴ OK
 -WATER TABLE ELEV = 695±
 -LOWEST BMP ELEV = 701.5±



PRELIMINARY ENGINEERING PLAN

SAFA PROPERTY, LLC
 8060 Lawndale
 Skokie, IL

CREEKVIEW PLAZA
 855 E. Roosevelt Road
 Lombard, Illinois

Prepared For:

Prepared By:

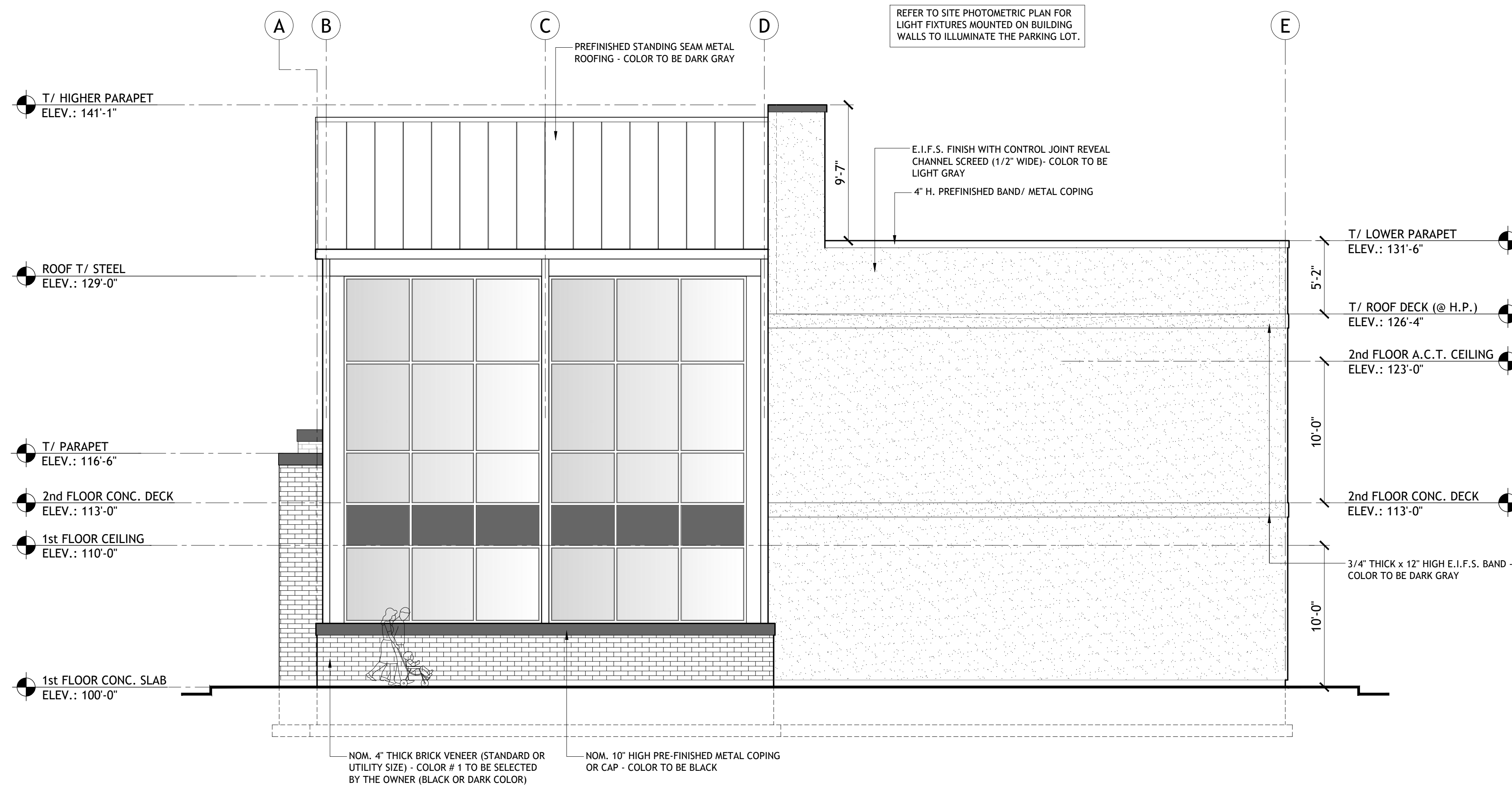
Natmark Engineering Resources

watermark-engineering.com | 2631 Ginger Woods Pkwy | Aurora, IL 60502 | (630) 375-1800

CHECKED BY: J. MILLER
 DESIGN BY: J. MILLER
 DRAWN BY: JOSH MILLER
 DATE: APRIL 26, 2024
 SCALE: 1" = 20'
 PROJECT NO.: 21-055

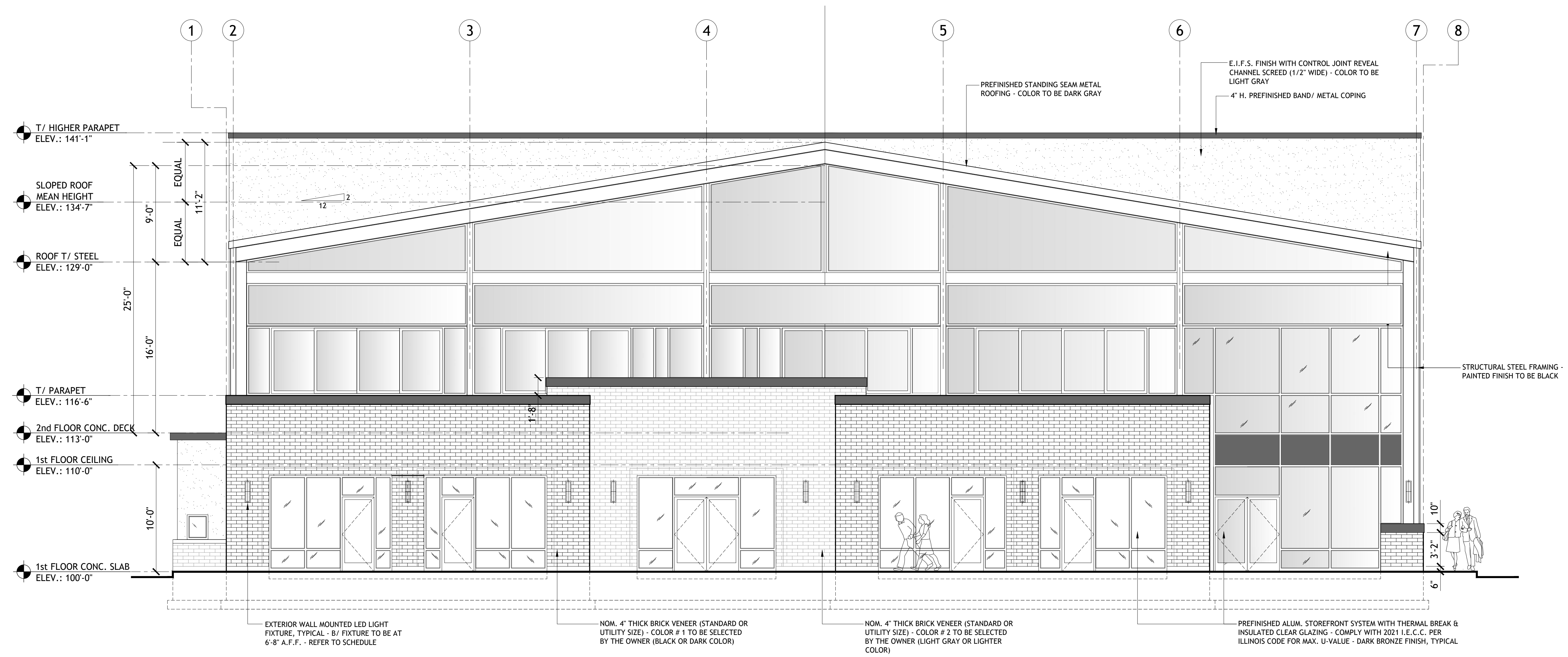
GRADING AND UTILITY PLAN

C-3



PROPOSED WEST (RIGHT SIDE) ELEVATION
SCALE: 3/16" = 1'-0"

2



PROPOSED NORTH (FRONT) ELEVATION - FROM E. ROOSEVELT ROAD
SCALE: 3/16" = 1'-0"

1

Document Record:

Issued Date	Description
03.17.2024	CONCEPTUAL SITE PLAN - OWNER REVIEW
03.30.2024	OWNER REVIEW
04.01.2024	REVISIONS - COORDINATION W/ CIVIL
04.05.2024	PRELIMINARY PLANS
04.19.2024	REVISIONS - COORDINATION W/ CIVIL
04.24.2024	REVISIONS - COORDINATION W/ CIVIL
05.07.2024	ELEV. REVISIONS STAFF COMMENTS

DO NOT SCALE THE DRAWINGS. PUAHIT ARCHITECTS, INC. ASSUMES NO RESPONSIBILITY FOR USE OF INCORRECT SCALE. CONTRACTOR SHALL VERIFY ALL EXISTING CONDITIONS PRIOR TO PROCEEDING WITH CONSTRUCTION. IN THE EVENT THAT THE CONTRACTOR DISCOVERS ANY ERROR, OMISSION OR CONFLICT AS TO THE INTEREST OF THE CONTRACT DOCUMENTS WITH REGARD TO THE PROPER EXECUTION AND COMPLETION OF THE WORK, THE CONTRACTOR SHALL IMMEDIATELY NOTIFY THE OWNER, THE ARCHITECT AND SEE CORRECTION OR REINTERPRETATION THEREOF PRIOR TO STARTING THE AFFECTED WORK.

THESE PLANS AND SPECIFICATIONS ARE PROTECTED UNDER FEDERAL COPYRIGHT LAWS. PUAHIT ARCHITECTS, INC. MAINTAINS OWNERSHIP OF SUCH AND ALL RIGHTS AND PRIVILEGES. THESE DRAWINGS ARE NOT TO BE REPRODUCED OR COPIED IN WHOLE OR PART. IT IS NOT TO BE USED ON ANY OTHER PROJECT.

PROFESSIONAL DESIGN FIRM ARCHITECT CORPORATION LICENSE NO.: 184-057513 License Expires: 04/30/2025

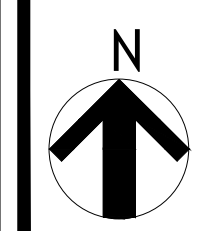
PA
PUROHIT ARCHITECTS
251 BRADWELL ROAD,
INVERNESS, IL 60010
Tel: (847) 220-8037
Cell: (847) 942-8777
info@purohitarchitects.com
www.purohitarchitects.com

Proposed 2-Story (with Slab-on-grade) Commercial Development:
Creeksview Plaza
At 855 E. Roosevelt Road, Lombard IL.

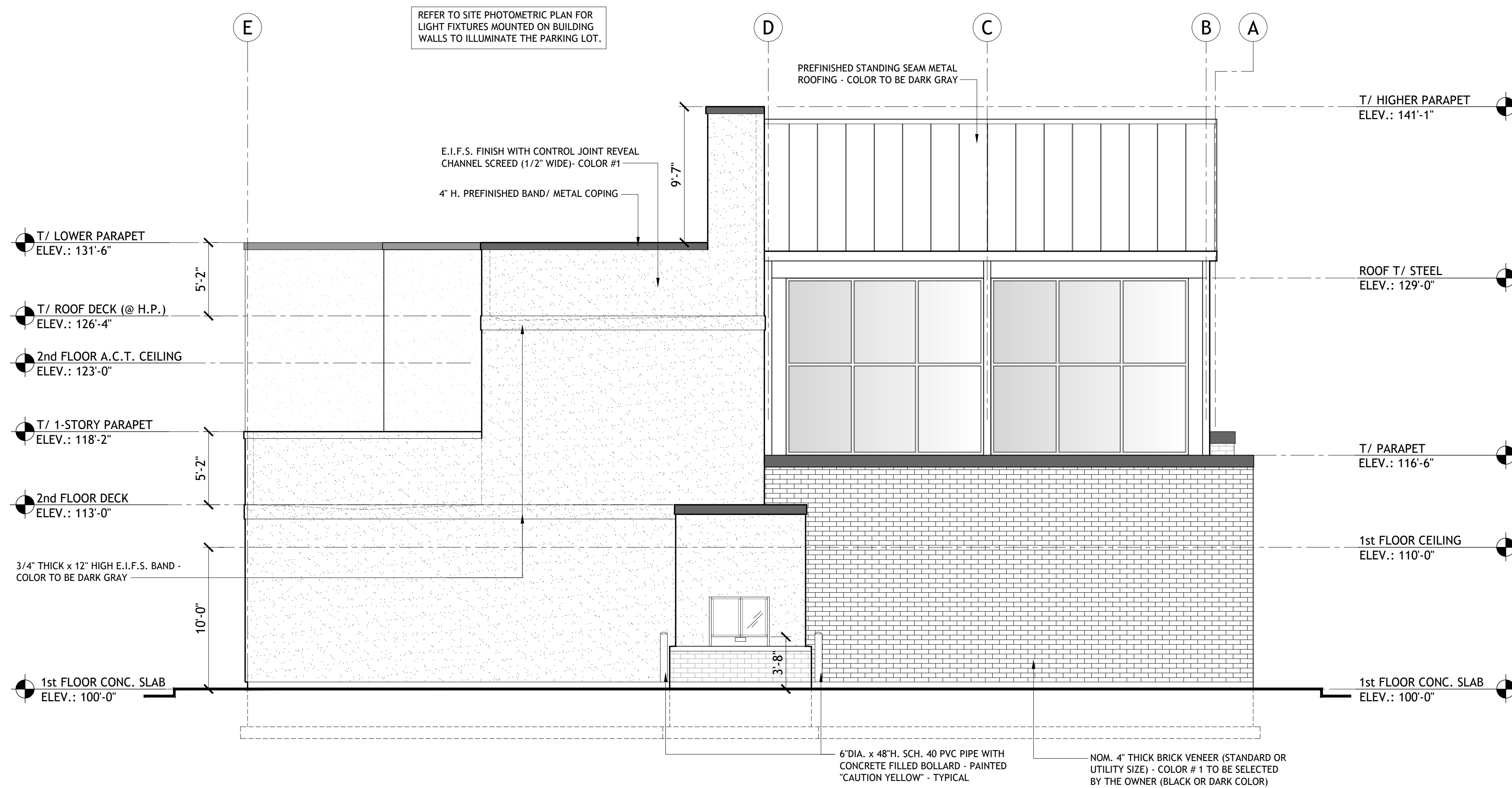
Issue Date: MAY 07, 2024
Drawn By: PAI

Sheet:
EXTERIOR BUILDING ELEVATIONS
A6.0

PAI PROJECT NUMBER
24119.00

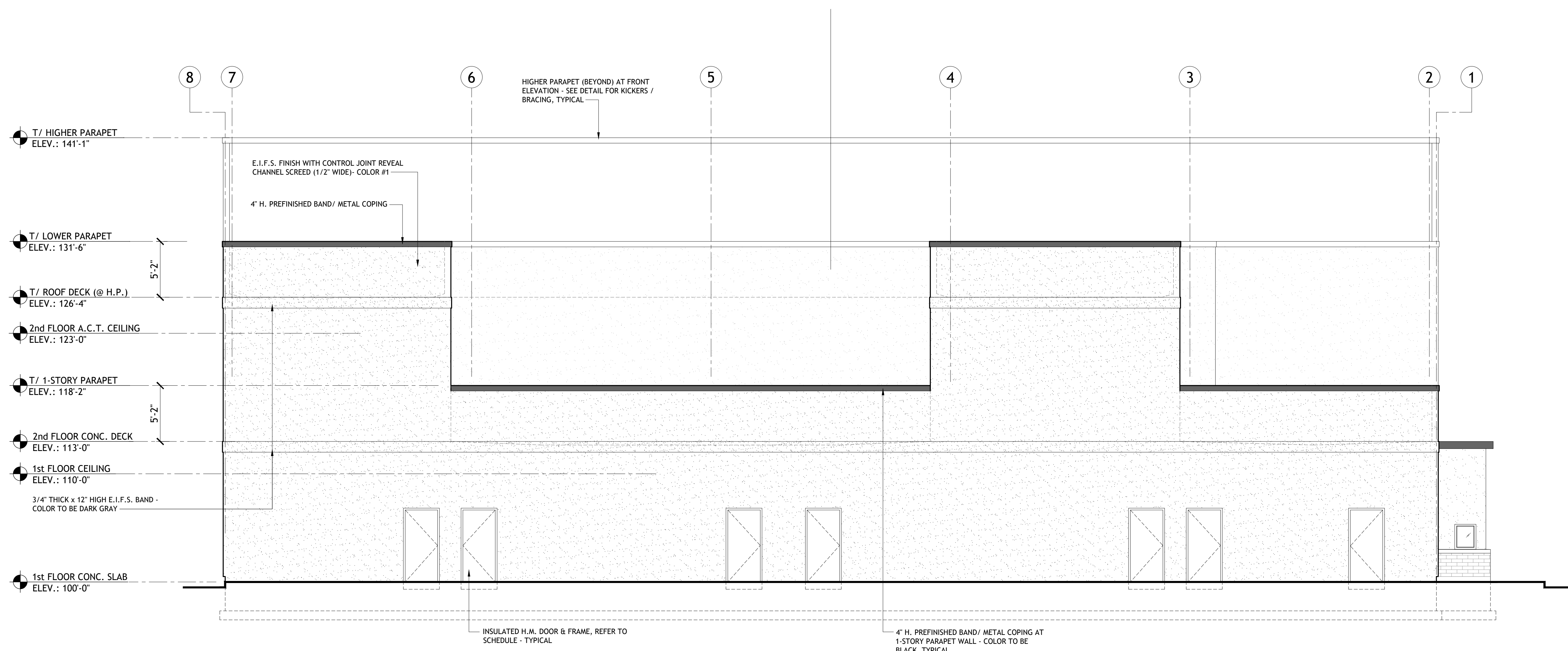


These drawings may have been reproduced at a scale different than originally drawn. Owner and Architect assume no responsibility for use of incorrect scale. Do not scale drawings. Contractor shall verify all existing conditions prior to proceeding with construction and notify architect immediately of any discrepancies or conflicts.



PROPOSED EAST (LEFT SIDE) ELEVATION
SCALE: 3/16" = 1'-0"

2



PROPOSED SOUTH (REAR) ELEVATION
SCALE: 3/16" = 1'-0"

1

Document Record:

Issue Date	Description
03.17.2024	CONCEPTUAL SITE PLAN - OWNER REVIEW
03.30.2024	OWNER REVIEW
04.01.2024	REVISIONS - COORDINATION W/ CIVIL
04.05.2024	PRELIMINARY PLANS - VILLAGE REVIEW
04.19.2024	REVISIONS - COORDINATION W/ CIVIL
04.24.2024	REVISIONS - COORDINATION W/ CIVIL
05.07.2024	ELEV. REVISIONS STAFF COMMENTS

DO NOT SCALE THE DRAWINGS. PUAHIT ARCHITECTS, INC. ASSUMES NO RESPONSIBILITY FOR USE OF INCORRECT SCALE. CONTRACTOR SHALL VERIFY ALL EXISTING CONDITIONS PRIOR TO PROCEEDING WITH CONSTRUCTION. IN THE EVENT THAT THE CONTRACTOR DISCOVERS ANY ERROR, OMISSION OR CONFLICT AS TO THE INTEREST OF THE CONTRACT DOCUMENTS WITH REGARD TO THE PROPER EXECUTION AND COMPLETION OF THE WORK, THE CONTRACTOR SHALL IMMEDIATELY NOTIFY THE OWNER OR THE ARCHITECT AND SEEK CORRECTION OR INTERPRETATION THEREOF PRIOR TO STARTING THE AFFECTED WORK.

THESE PLANS AND SPECIFICATIONS ARE PROTECTED UNDER FEDERAL COPYRIGHT LAWS. PUAHIT ARCHITECTS, INC. MAINTAINS OWNERSHIP OF SUCH AND ALL RIGHTS AND PRIVILEGES. THESE DRAWINGS ARE NOT TO BE REPRODUCED OR COPIED IN WHOLE OR PART. IT IS NOT TO BE USED ON ANY OTHER PROJECT.

PROFESSIONAL DESIGN FIRM ARCHITECT CORPORATION LICENSE NO.: 184-050543
License Expires: 04/30/2025

PUA
PUROHIT ARCHITECTS
251 BRADWELL ROAD,
INVERNESS, IL 60010
Tel. (847) 220-8037
Cell. (847) 942-8777
info@purohitarchitects.com
www.purohitarchitects.com

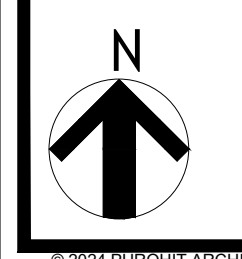
Proposed 2-Story (with Slab-on-grade) Commercial Development:

Creeksview Plaza
At 855 E. Roosevelt Road, Lombard IL.

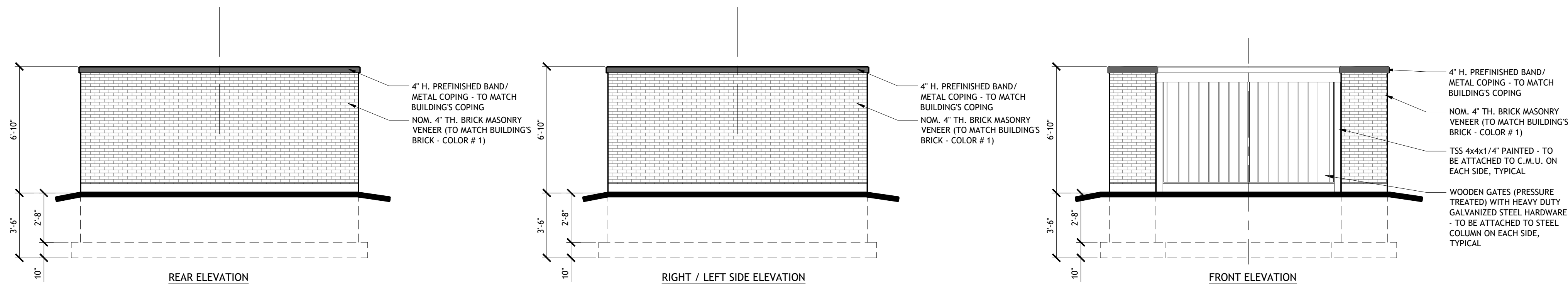
Issue Date: MAY 07, 2024
Drawn By: PAI

Sheet: EXTERIOR BUILDING ELEVATIONS
A6.1

PAI PROJECT NUMBER
24119.00

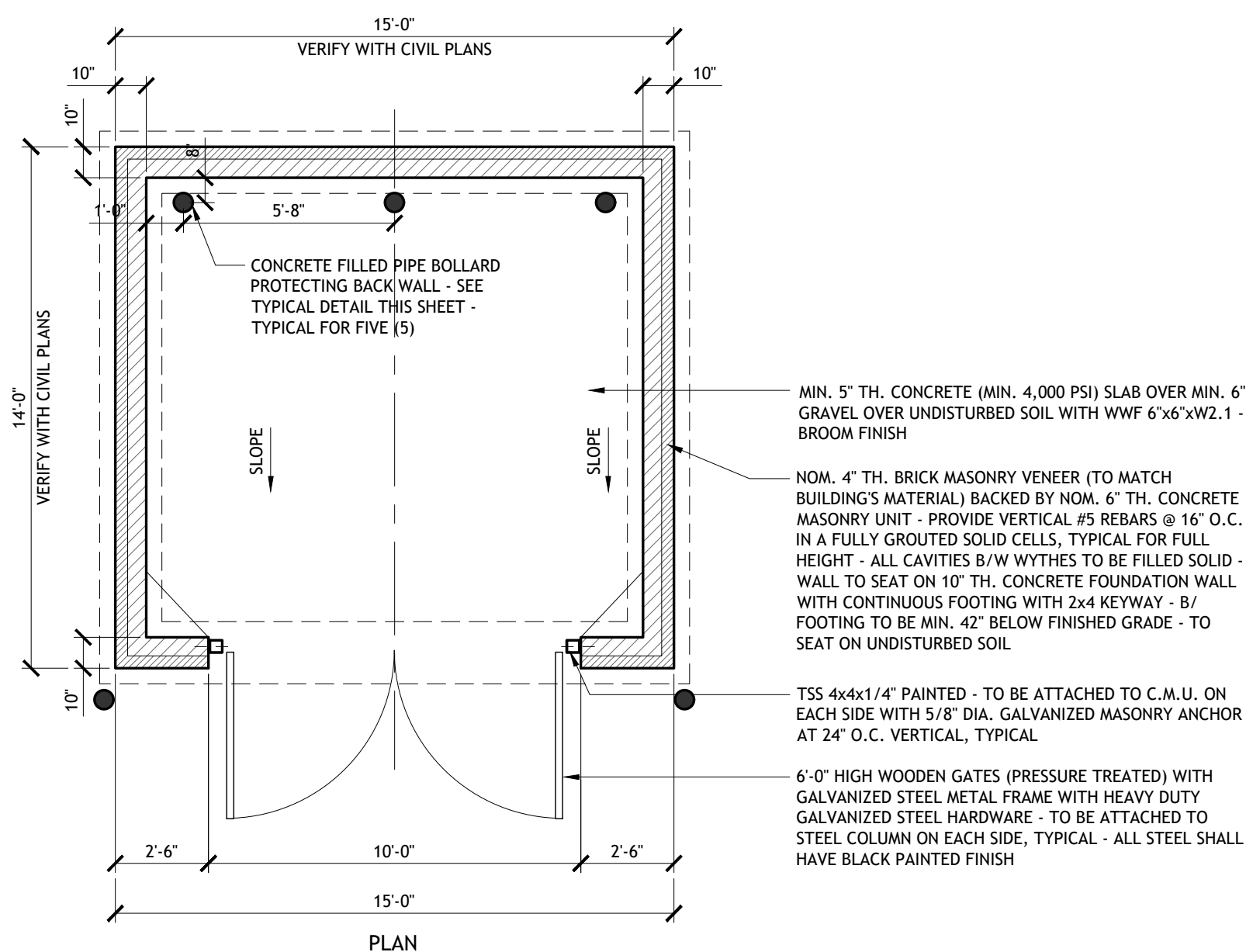


These drawings may have been reproduced at a scale different than originally drawn. Owner and Architect assume no responsibility for use of incorrect scale. Do not scale drawings. Contractor shall verify all existing conditions prior to proceeding with construction and notify architect immediately of any discrepancies or conflicts.

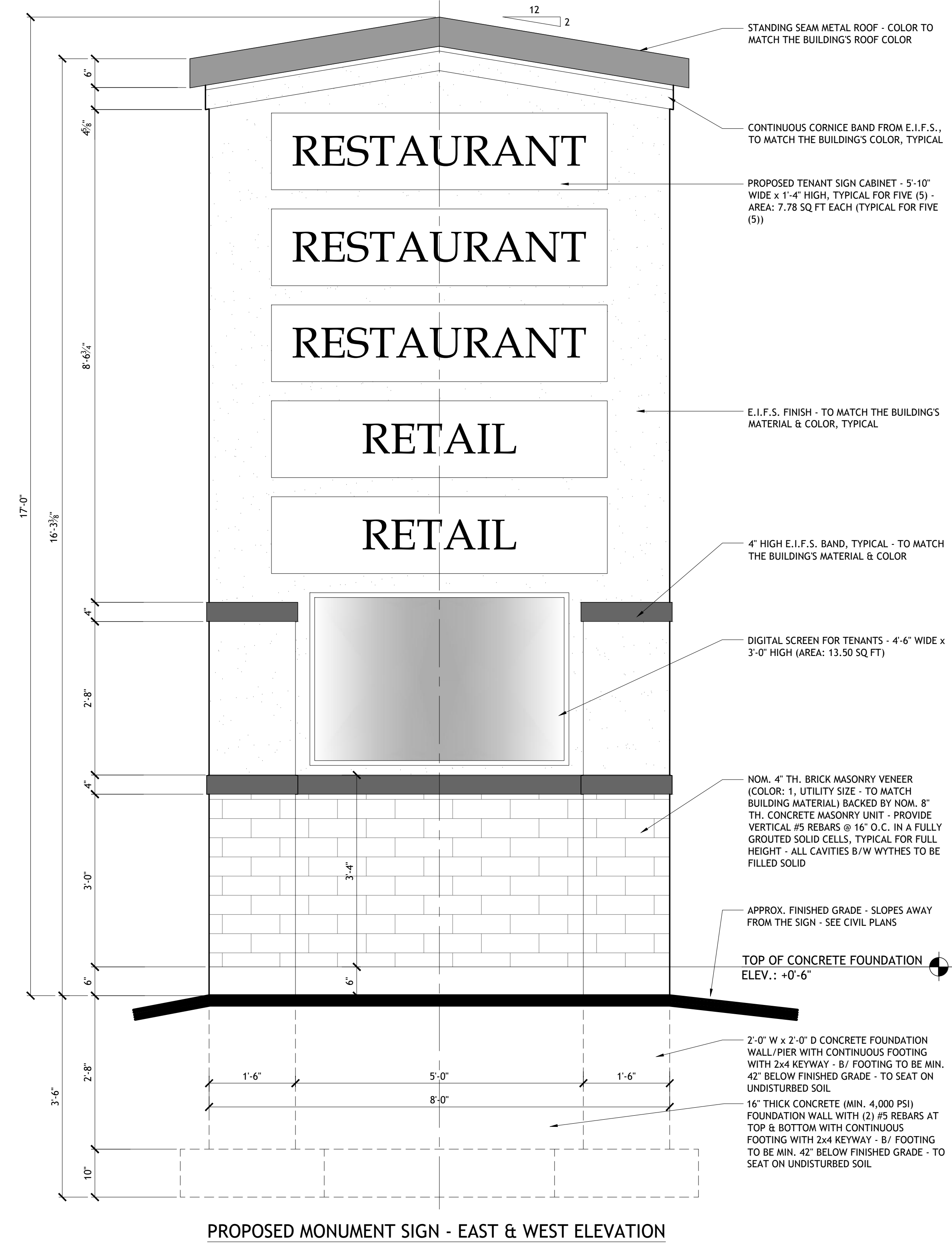


PROPOSED TRASH ENCLOSURE ELEVATIONS
 SCALE: 1/4" = 1'-0"

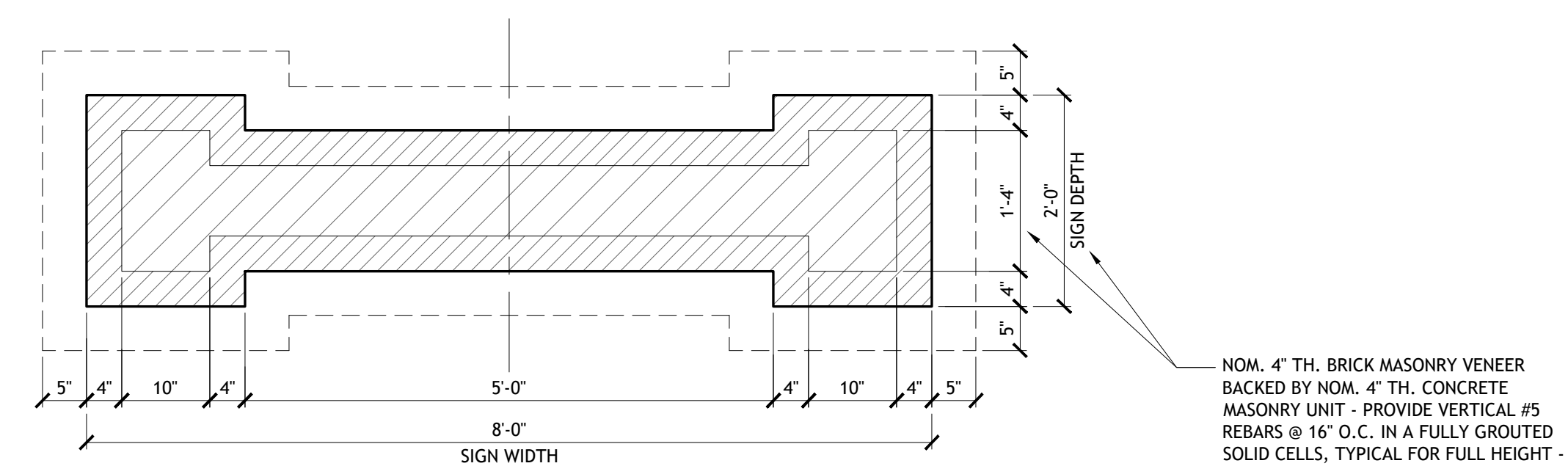
3



PROPOSED TRASH ENCLOSURE PLAN 2
 SCALE: 1/4" = 1'-0"



PROPOSED MONUMENT SIGN - EAST & WEST ELEVATION



PROPOSED MONUMENT SIGN - PLAN

PROPOSED MONUMENT SIGN - EAST & WEST ELEVATIONS
 SCALE: 3/4" = 1'-0"

1

Document Record:

Issued Date	Description
03.17.2024	CONCEPTUAL SITE PLAN - OWNER REVIEW
03.30.2024	OWNER REVIEW
04.01.2024	REVISIONS - COORDINATION W/ CIVIL
04.05.2024	PRELIMINARY PLANS - VILLAGE REVIEW
04.19.2024	REVISIONS - COORDINATION W/ CIVIL
04.24.2024	REVISIONS - COORDINATION W/ CIVIL

DO NOT SCALE THE DRAWINGS. Purohit Architects, Inc. ASSUME NO RESPONSIBILITY FOR USE OF INCORRECT SCALE. CONTRACTOR SHALL VERIFY ALL EXISTING CONDITIONS PRIOR TO PROCEEDING WITH CONSTRUCTION. IN THE EVENT THAT THE CONTRACTOR DISCOVERS ANY ERROR, OMISSION OR CONFLICT AS TO THE RESULT OF THE CONTRACT DOCUMENTS WITH REGARD TO THE PROPER EXECUTION AND COMPLETION OF THE WORK, THE CONTRACTOR SHALL IMMEDIATELY NOTIFY THE OWNER OR THE ARCHITECT AND SEEK CORRECTION OR INTERPRETATION THEREOF PRIOR TO STARTING THE AFFECTED WORK.

THESE PLANS AND SPECIFICATIONS ARE PROTECTED UNDER FEDERAL COPYRIGHT LAWS. Purohit Architects, Inc. MAINTAINS OWNERSHIP OF SUCH AND ALL RIGHTS AND PRIVILEGES. THESE DRAWINGS ARE NOT TO BE REPRODUCED OR COPIED IN WHOLE OR PART, IF IT IS NOT TO BE USED ON ANY OTHER PROJECT.

PROFESSIONAL DESIGN FIRM ARCHITECT CORPORATION LICENSE NO.: 138A005943
 License Expires: 04/30/2025

IPA
Purohit Architects
 251 BRADWELL ROAD,
 INVERNESS, IL 60010
 Tel. (847) 220-8037
 Cell. (847) 942-8777
 info@purohitarchitects.com
 www.purohitarchitects.com

Proposed 2-Story (with Slab-on-grade) Commercial Development:
Creekview Plaza
 At 855 E. Roosevelt Road, Lombard IL

Issue Date: APRIL 24, 2024
 Drawn By: PAI

Sheet:
PROPOSED SITE DETAILS
A1.0
 PAI PROJECT NUMBER
 24119.00

Document Record:

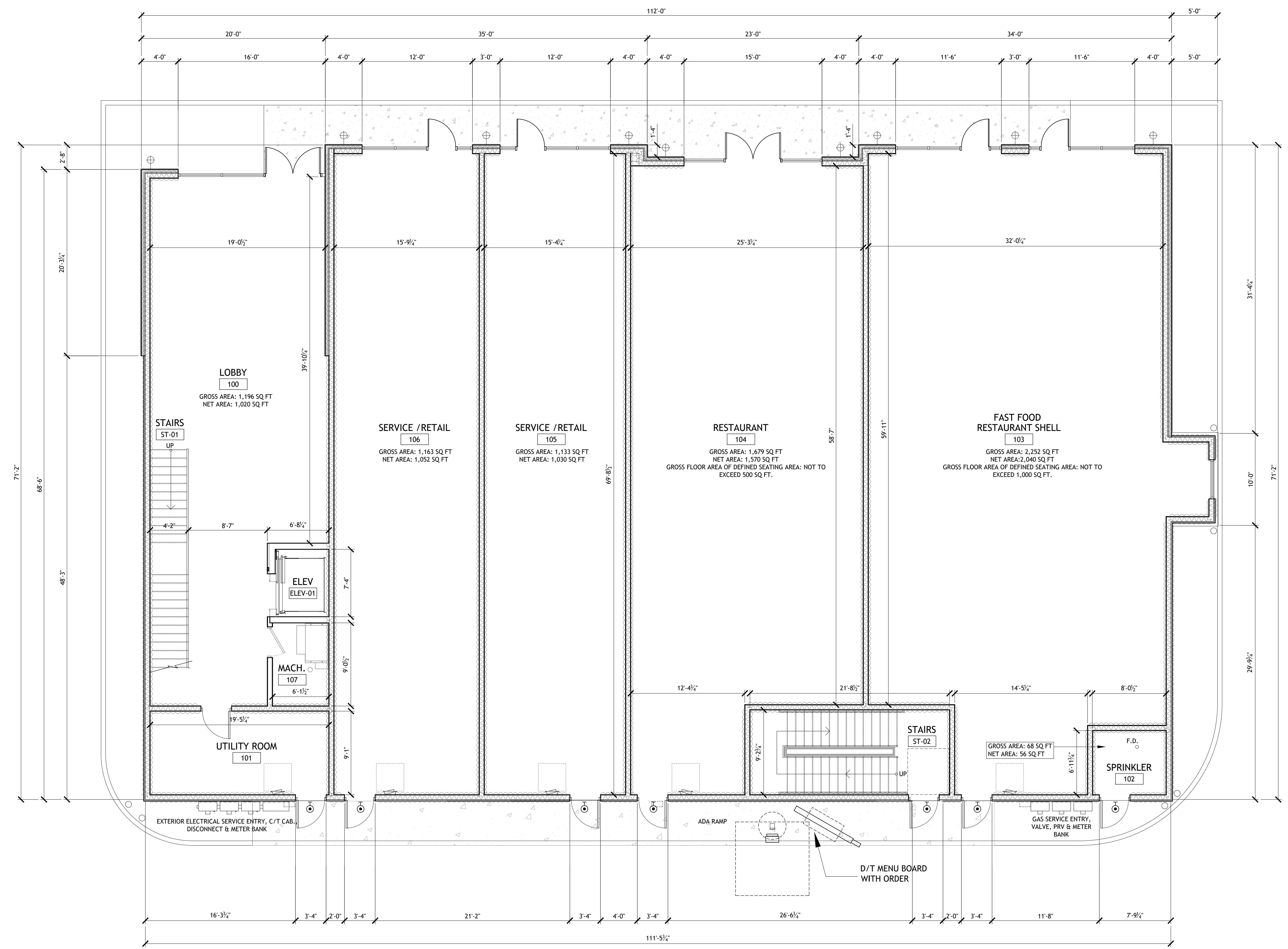
Issued Date	Description
03.17.2024	CONCEPTUAL SITE PLAN - OWNER REVIEW
03.30.2024	OWNER REVIEW
04.01.2024	REVISIONS - COORDINATION W/ CIVIL
04.05.2024	PRELIMINARY PLANS - VILLAGE REVIEW
04.19.2024	REVISIONS - COORDINATION W/ CIVIL
04.24.2024	REVISIONS - COORDINATION W/ CIVIL

DO NOT SCALE THE DRAWINGS. PUROHIT ARCHITECTS, INC. ASSUMES NO RESPONSIBILITY FOR USE OF INCORRECT SCALE. CONTRACTOR SHALL VERIFY ALL EXISTING CONDITIONS PRIOR TO PROCEEDING WITH CONSTRUCTION. IN THE EVENT THAT THE CONTRACTOR DISCOVERS ANY DISCREPANCY OR CONTRADICTION TO THE INTENT OF THE CONTRACT DOCUMENTS WITH REGARD TO THE PROPER EXECUTION AND COMPLETION OF THE WORK, THE CONTRACTOR SHALL IMMEDIATELY NOTIFY THE OWNER OR THE ARCHITECT AND SEEK CORRECTION OR INTERPRETATION THEREOF PRIOR TO STARTING THE AFFECTED WORK.

THESE PLANS AND SPECIFICATIONS ARE PROTECTED UNDER FEDERAL COPYRIGHT LAWS. © PUROHIT ARCHITECTS, INC. MAINTAINS OWNERSHIP OF SUCH AND ALL RIGHTS AND PRIVILEGES. THESE DRAWINGS ARE NOT TO BE REPRODUCED OR COPIED IN WHOLE OR PART. IT IS NOT TO BE USED ON ANY OTHER PROJECT.

PROFESSIONAL DESIGN FIRM ARCHITECT CORPORATION LICENSE NO. 184 005943 License Expires: 04/30/2025

IPA
PUROHIT ARCHITECTS
 251 BRADWELL ROAD,
 INVERNESS, IL 60010
 Tel: (847) 220-8037
 Cell: (847) 942-8777
 info@purohitarchitects.com
 www.purohitarchitects.com



PROPOSED MAIN FLOOR PLAN
 SCALE: 3/16" = 1'-0"

1

Proposed 2-Story (with Slab-on-grade) Commercial Development:

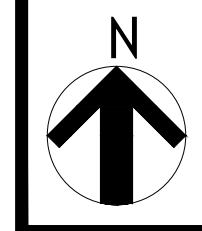
Creeksview Plaza
 At 855 E. Roosevelt Road, Lombard IL.

Issue Date: APRIL 24, 2024
 Drawn By: PAI

Sheet: MAIN FLOOR PLAN

A3.0

PAI PROJECT NUMBER 24119.00



These drawings may have been reproduced at a scale different than originally drawn. Owner and Architect assume no responsibility for use of incorrect scale. Do not scale drawings. Contractor shall verify all existing conditions prior to proceeding with construction and notify architect immediately of any discrepancies or conflicts.

Document Record:

Issued Date	Description
03.17.2024	CONCEPTUAL SITE PLAN - OWNER REVIEW
03.30.2024	OWNER REVIEW
04.01.2024	REVISIONS - COORDINATION W/ CIVIL
04.05.2024	PRELIMINARY PLANS - VILLAGE REVIEW
04.19.2024	REVISIONS - COORDINATION W/ CIVIL
04.24.2024	REVISIONS - COORDINATION W/ CIVIL

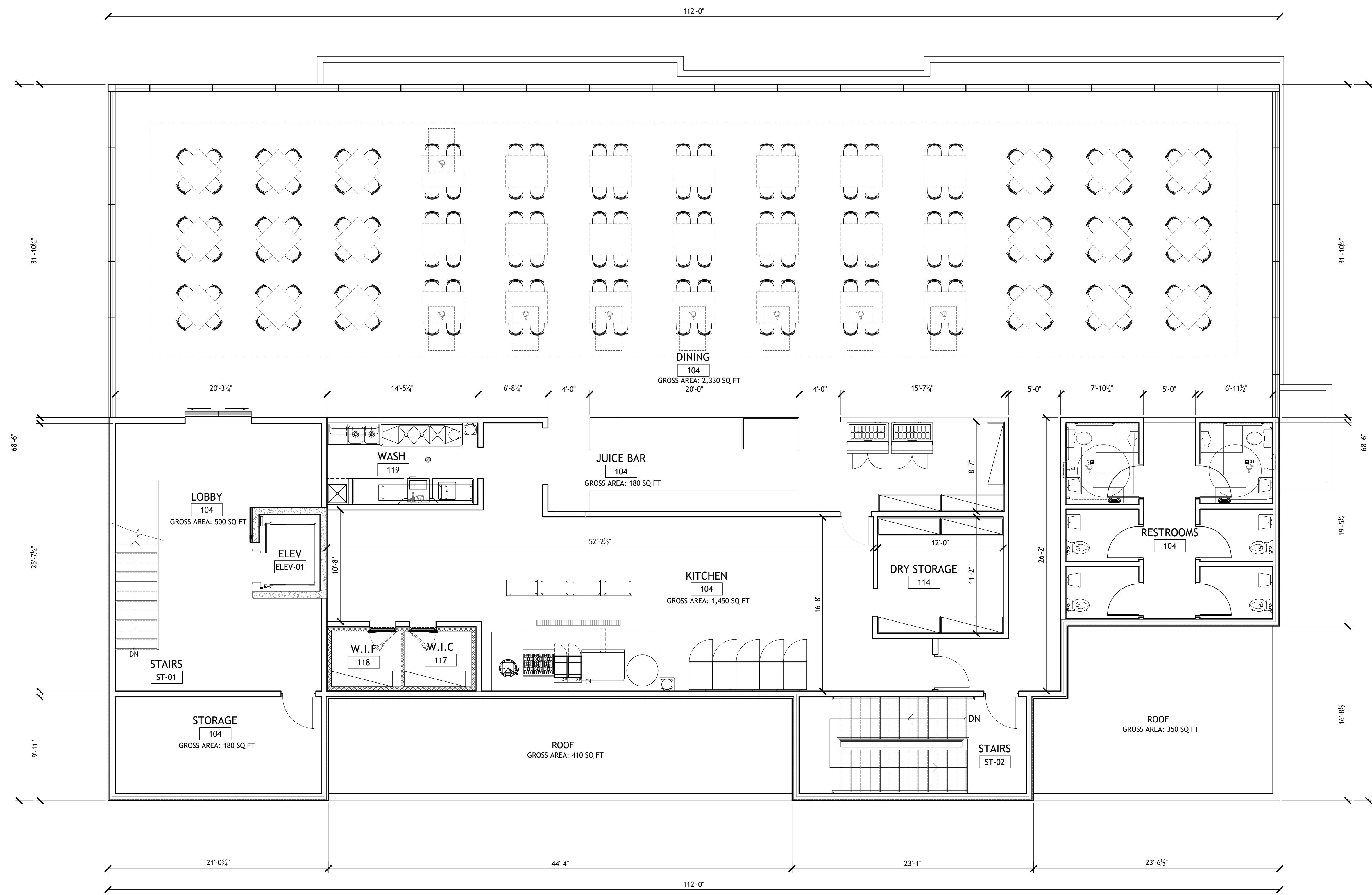
DO NOT SCALE THE DRAWINGS. PUROHIT ARCHITECTS, INC. ASSUMES NO RESPONSIBILITY FOR USE OF INCORRECT SCALE. CONTRACTOR SHALL VERIFY ALL EXISTING CONDITIONS PRIOR TO PROCEEDING WITH CONSTRUCTION. IN THE EVENT THAT THE CONTRACTOR DISCOVERS ANY DISCREPANCY OR CONFLICT, IT IS TO THE INTENT OF THE CONTRACT DOCUMENTS WITH REGARD TO THE PROPER RESOLUTION AND COMPLETION OF THE WORK, THE CONTRACTOR SHALL IMMEDIATELY NOTIFY THE OWNER OR THE ARCHITECT AND SEEK CORRECTION OR INTERPRETATION THEREOF PRIOR TO STARTING THE AFFECTED WORK.

THESE PLANS AND SPECIFICATIONS ARE PROTECTED UNDER FEDERAL COPYRIGHT LAWS. PUROHIT ARCHITECTS, INC. MAINTAINS OWNERSHIP OF SUCH AND ALL RIGHTS AND PRIVILEGES. THESE DRAWINGS ARE NOT TO BE REPRODUCED OR COPIED IN WHOLE OR PART. IT IS NOT TO BE USED ON ANY OTHER PROJECT.

PROFESSIONAL DESIGN FIRM ARCHITECT
CORPORATION LICENSE NO.: 184 005943
License Expires: 04/30/2025



PUROHIT ARCHITECTS
253 BRADWELL ROAD,
INVERNESS, IL 60010
Tel. (847) 220-8037
Cell. (847) 942-8777
info@purohitarchitects.com
www.purohitarchitects.com



PROPOSED 2ND FLOOR PLAN
SCALE: 3/16" = 1'-0"

Proposed 2-Story (with Slab-on-grade) Commercial Development:

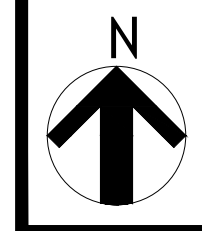
Creeksview Plaza
At 855 E. Roosevelt Road, Lombard IL

Issue Date: APRIL 24, 2024
Drawn By: PAI

Sheet: 2ND FLOOR PLAN

A3.1

PAI PROJECT NUMBER
24119.00



These drawings may have been reproduced at a scale different than originally drawn. Owner and Architect assume no responsibility for use of incorrect scale. Do not scale drawings. Contractor shall verify all existing conditions prior to proceeding with construction and notify architect immediately of any discrepancies or conflicts.

VILLAGE OF LOMBARD
 B4A ROOSEVELT ROAD CORRIDOR DISTRICT TABLE OF COMPLIANCE
 CREEKVIEW PLAZA
 855 EAST ROOSEVELT ROAD, LOMBARD (PIN 06-21-100-013)

SECTION	TERMS	REQUIRED	PROPOSED	APPROVED PROJECT
155.417(E)(F)	The IDRC shall review all applicable permits for new construction to determine compliance with the Chapter. The IDRC shall consider. . . .	Process and standards	Will comply	Complied
155.417(G)(1)	Permitted use list, (a)(iii), (vi), (xi), (xiii), (xviii), (xx), (b)(i), (ii), (vii), (ix), (xi), (xii), (xiii), (xvii), (xx), (xxii)	Most uses could occupy building	Retail, Office, Restaurant, Banquet	Restaurant, Banquet
155.417(G)(2)	Conditional use list (b)(iv)	Drive through (8 min)	Drive through (8-9)	NEW CONDITIONAL USE
155.417(G)(2)(a)(vii)	Conditional use to allow restaurant and banquet with entertainment and dancing	As part of restaurant operations and secondary to principal use	Restaurant/Banquet dancing, entertainment secondary to principal use	Restaurant/Banquet dancing, entertainment secondary to principal use
155.417(G)(6)	Conditional use to allow building over 40 feet	Up to 45 feet	35' feet	Approved above 41'
155.417(G)(10)(b)	Conditional use for outdoor sales and display		NO LONGER NEEDED	Approved for within parking spaces
155.417(G)(3)	Minimum lot area	40,000 SF	106,805 SF	Complied
155.417(G)(4)	Minimum lot width	150 feet	312 feet	Complied
155.417(G)(5)(a)	Front yard	30 feet	+/-86 feet	+/-100
155.417(G)(5)(c)	Interior side yard	10 feet	30' (E); >160' (W)	Complies
155.417(G)(5)(d)	Rear yard	30 feet	+/-175 feet	+/-176 feet
155.417(G)(6)	Maximum building height	40 feet	<40 feet	<40 feet
155.417(G)(7)	10% minimum open space	10,681 SF	+/-51,000 SF	+/-51,000 SF
155.417(G)(8)	Transitional building setbacks	40 feet (rear)	+/-175 feet	+/-136
155.417(G)(9)	Landscaping (see below)			
155.417(G)(10)	Indoor operations	Required	Indoor	Mostly indoor
155.417(G)(10)	Service screening	5' pl strip; 6' barrier	5' pl strip; 6' barrier	Complied
155.417(G)(11)	Signs (see sign table)		Will Comply	Complied
155.417(G)(12)	Parking and loading (see below)	IDOT/screen loading	IDOT/will screen	Complied
155.417(G)(13)	Rooftop mechanicals screened in accord w 155.221, conceal parapet		Mechanicals screened by parapets	Complied
155.417(G)(14)	Lighting (see below)	155.602(A)(10)(d)	Photometrics	Complies

VILLAGE OF LOMBARD
B4A ROOSEVELT ROAD CORRIDOR DISTRICT TABLE OF COMPLIANCE
CREEKVIEW PLAZA
PAGE 2

SECTION	TERMS	REQUIRED	PROPOSED	NOTES
155.417(G)(14)(a)	Direct away from adjacent and downward	Cut off shields	Directed except for easement area, variation needed x-access, no uplighting at grade	Current variation for easement and uplighting
155.417(G)(14)(b)	Max resid height light poles	8 feet, <30' from S lot	25' outside res buffer	Complied
155.417(G)(14)(c)	Style compatible with arch/LS		Complies	Complied
155.417(G)(14)(d)	Articulate building/safety		Complies	Complied
155.602(A)(3)(e)	Located in any yard	Any yard	Front	Complied
155.602(A)(3)(f)	Comply with 155.700		See Landscape Plan	Complied
155.602(A)(5), (C)	Length of stalls	18 feet 16.5 feet 16 feet	18 feet 16.5 feet 16 feet	Complied
155.602(A)(5), (C)	Length to lot line/to LS island	16 feet	16.5 feet, 16 feet	Complied
155.602(A)(5)(a), (C)	Size of stalls (width)	9 feet	9 feet	Complied
155.602(B)	Accessible parking (number)	4	4	Complied
155.602(A)(6), (C)	Access aisles/street	24 feet/Safe	24 feet/Safe	Complied
155.602(A)(10)(d)(ii)	Lighting	0.5FC min/2 max avg	Photometrics	Complied, variation
155.602(A)(10)(d)(iii)	Directed away	From lot lines	Directed to easement	Directed to easement
155.602(A)(10)(d)(iii)	Lighting at lot lines	0.5 FC S/ 3 NEW	Variation amid S LS area	Complied
155.602(A)(10)(d)(iv)	Lighting pole height	40 feet	25 feet	Complied
155.602 table 6.3	Parking Required (two-story)	See parking table	82, complies	Variation for parking
155.603(B) Table 6-5	Loading Required	0	1 12x30	Complied (1)
155.603(A)(1)	Location	10' east side yard	5' E side yard, variation	5' E side yard variation
155.603(A)(2)(a)	Size apron access (two-story)	12x30; 60' ap; 24'	12x30; 12x30; 60'	Complies
155.603(A)(6)	Allocation for loading (two-story)	No other allocation	No other allocation	Complies
155.603(B)	Loading number	0 12x30	2 12x30	Complies
155.702(A)(2)	Dir. Comm. Development	Modified LS standard		Available
155.702(B)(C)	LS Plan	Required	Provided	Complied
155.704(A)	Scaling of plants to building	Required	Provided	Complied
155.704(B)	Selection	Non-invasive, strong	Provided	Complied
155.704(C)	Evergreens for screening	Required	Provided	Complied
155.704(D)	Shade trees	Required at 2.5" cal	Provided	Complied
155.704(E)	Soften building walls	Suggested	Provided in part	Provided in part
155.704(G)	Detention/retention	LS required	Provided	Complied
155.704(H)	Permanent means of watering	Required	Irrigation planned	Complied
155.704(I)	Energy conservation	Placements noted	Planned in part	No requirement
155.704(J)	Preservation of plant material	Suggested	Provided west acre	Complied

VILLAGE OF LOMBARD
B4A ROOSEVELT ROAD CORRIDOR DISTRICT TABLE OF COMPLIANCE
CREEKVIEW PLAZA
PAGE 3

SECTION	TERMS	REQUIRED	PROPOSED	NOTES
155.704(K)	Berming	Sugg when practical	Not practical	Not practical
155.705(B)	Fine grade ROW	Required	Planned	Complied
155.705(C)	Parkway trees	6 required	6 provided	Complied
155.706(B)(1)	Interior LS volume	5% minimum	Complies	Complied
155.706(B)(2)(a)	Disbursement of LS in lot	Required	Provided	Complied
155.706(B)(2)(b)	Minimum island size	120 SF, 7' back2back	120 SF, 7' back2back	Complied
155.706(B)(2)(c)(i)	Ornamentals as sole means	Prohibited	Not proposed	Complies
155.706(B)(2)(c)(ii)	Shade tree ratio	1 per 120 SF LS area	9 of 12	Variation to allow LS Plan
155.706(B)(2)(c)(iii)	Ground cover ratio	50% of LS area	100% of LS area	Complied
155.706(C)(1)	Perimeter parking lot LS width	5 feet	5-10++ feet	Complied
155.706(C)(2)(b)(i)	Front 4' ht shrub or evergreen	157 feet (50%)	100 feet	Variation to allow LS Plan
155.706(C)(2)(b)(ii)	Ground cover ratio front (sod pl)	100%	100%	Variation to allow LS Plan
155.706(C)(3)(a)	Side 4' ht shrub or evergreen	167 feet 50%, 7-9 grp	170 feet, 7-9 grp	Variation to allow LS Plan
155.706(C)(3)(b)	Ground cover ratio side (sod pl)	100%	100%	Complied
155.707(A)(5)(a)	Transition yard LS	30 feet 155.711	35'	Complied 35'
155.707(B)(4)(a)	Fence screen for service areas	6' (5' LS in/25' out)	6' (5' LS in/25' out)	Variation to allow LS Plan
155.707(B)(4)(b)	Shade trees every 25 feet	13 shade trees	13 shade clustered	Variation to allow LS Plan
155.707(B)(4)(c)	Shrubs at 3' grow to 6'+	235 feet (75%)	235 feet	Variation to allow LS Plan
155.707(B)(4)(d)	Unplanted as lawn	100%	Not 100%, no wetland change/planting	Planted as lawn and with wetland seed, variation
155.708(A)	10' wide foundation LS	All sides	CDD auth needed	CDD authorization given
155.709(B)	Width	5' NEW, 30' S	5' NEW, 35' 7" S	Variation to allow LS Plan
155.709(B)(1)	Shade trees every 75 feet	9 shade	5 east, 4 SE clustered	Variation to allow LS Plan
155.709(B)(3)	Ground cover ratio	100%	100%	Variation to allow LS Plan
155.710	Waste enclosure screen	All sides. 6'-8'	All sides. 6'-8'	Complied
155.711	Innovation	Encourage/Reward	Preservation of E acre	Variation to allow LS Plan

**VILLAGE OF LOMBARD
RESTAURANT PARKING ANALYSIS
CREEKVIEW PLAZA**

LOCATION AND DESIGN

Within 300'	155.602(A)(3)(b)	Offsite not needed as a conditional use (lease, 155.602(A)(4))
Any Yard	155.602(A)(3)(b)	Front, side
18' unless	155.602(A)(5)	Complies
16' LS >5' lot	155.602(A)(5)	Complies
9' wide	155.602(A)(5)(a)	Complies
8.25' excess	155.602(A)(5)(a)	Excess parking may be if for employees or compact vehicles
Accessible	155.602(A)(5)	No deviations from IL Accessibility Code (4 required/provided)
Aisle (T6.2)	155.602(A)(6)	>24' provided throughout
Park Fl Area	155.602(A)(8)(a)(i)	Exclude bathrooms, storage, stairs, foyer, shafts
Employee	155.602(A)(8)	Use peak shift
Biz Vehicle	155.602(A)(11)	Designated spaces
Min Spaces	155.602(A)(1)	Table 6.3 Schedule
Office	Table 6.3	3:1000 gross floor area
Personal care	Table 6.3	3:1000 gross floor area
Clinic	Table 6.3	3:1000 gross floor area
Carry-out	Table 6.3	3:1000 gross floor area
Fast food	Table 6.3	9:1000 defined seating area
Banquet	Table 6.3	1:3 seats plus 1:1 employee peak shift
Sit Down	Table 6.3	12:1000 defined seating area
Reg Sh Ctr	Table 6.3	3:1000, but only shopping center is defined

TWO STORY CONCEPT (BASED ON MINIMUM REQUIRED FOR EVENING)

UNIT	USE	DINING AREA	GFA-ALL	REQ'D	NOTES		
A	LOBBY	0	0	0			
B	RETAIL/OFFICE	0	1030	3.09			
C	RETAIL/OFFICE	0	1030	3.09			
D	SIT DOWN	500	1570	6			
E	FAST FOOD	1000	2040	9	TOTAL	21.18	35
DRIVE THRU	STACKING	8 OF 8					
UPPER	BANQUET	156		52			
UPPER	EMPLOYEES	10		8	TOTAL	81.18	
					PROVIDED	82	
					ACCESSIBLE	4	
LOADING	2 SHORT (12X30)	<i>0 required</i>					

TWO STORY CONCEPT (BASED ON MINIMUM REQUIRED FOR DAYTIME)

UNIT	USE	DINING AREA	GFA-ALL	REQ'D	NOTES		
A	LOBBY	0	0	0			
B	RETAIL/OFFICE	0	1052	3.156			
C	RETAIL/OFFICE	0	1030	3.09			
D	SIT DOWN	500	1570	6			
E	FAST FOOD	1000	2040	9	TOTAL	21.246	35
DRIVE THRU	STACKING	8 OF 8					
UPPER	SIT DOWN	2330	6400	27.96	TOTAL	49.206	
					PROVIDED	82	
					ACCESSIBLE	4	
LOADING	2 SHORT (12X30)	<i>0 required</i>					

B4A ROOSEVELT ROAD CORRIDOR DISTRICT SIGN COMPLIANCE**855 EAST ROOSEVELT ROAD, LOMBARD (PIN 06-21-100-013)***See Code, Chapter 153 (Not Zoning Ordinance)*

SECTION	REGULATION	REQUIRED	PROVIDED	NOTES
153.216(B)	FS sign barrier if with in 3' of...	6" curbing required		Need 3' to edge of support and 12' clear
153.216(B)	FS sign clearance	12 feet or more		Complies, not suspended
153.216(C)	Landscaping	Required at FS sign	Provided	Complies
153.241(A)	Valet sign in valet loading zone	16 SF. 2 allowed	None proposed	
153.242(B)	Max wall sign proj/min height	12 inches/8 feet		Complies
153.242(D)	Wall sign placement	Front or side	Front and side	Complies
153.242(E)	Wall sign w awning, projecting or canopy sign	Prohibited	Not proposed	Complies
153.505(B)(6)(b)	FS sign area max	125 SF	68 SF	Complies, measured on one face
153.505(B)(6)(c)	Setback	5 feet	5 feet	Complies
153.505(B)(6)(d)	Max Height	20 feet	17 feet	Complies
153.505(B)(6)(e)	Max Number	1	1	Complies
153.505(B)(6)(f)	Distance between FS signs	100 feet	300-350 feet	Complies
153.505(B)(19)(a)(i)	Max total wall sign area (all)	100 SF		Will Comply
153.505(B)(19)(a)(i)	Wall sign location front side			Will Comply