

**VILLAGE OF LOMBARD**  
**REQUEST FOR BOARD OF TRUSTEES ACTION**  
**For Inclusion on Board Agenda**  
**Bids and Proposals**

TO: Scott Niehaus, Village Manager  
FROM: Carl Goldsmith, Director of Public Works  
DATE: August 26, 2024 Agenda Date: September 5, 2024  
TITLE: Village Hall Board Room Acoustic Wallcovering  
SUBMITTED BY: Scott Neetz, Facilities Supervisor

**RESULTS:**

Date Bids Were Published       N/A       Bidding Closed       N/A        
Total Number of Bids Received       1        
Total Number of Bidders Meeting Specifications       1        
Bid Security Required       Yes             X             No        
Performance Bond Required       Yes             X             No        
Were Any Bids Withdrawn       Yes             X             No      

**Explanation:**

Waiver of Bids Requested?       X       Yes       \_\_\_\_\_       No  
If yes, explain: Staff sought proposals from qualified vendors per the attached memorandum.  
Award Recommended to Lowest       \_\_\_\_\_       Yes       X       No  
Responsible Bidder?  
If no, explain:

**FISCAL IMPACT:**

Amount of Award: \$29,945.80  
Funding Source: 430.710.720.75620

**BACKGROUND/RECOMMENDATION:**

The project to update the Village Hall Board Room has included updating and replacing the acoustic panels that cover the back wall of the Board Room. The current panels have been abused, sun damaged and with current projects underway gives us opportunity to replace them with an updated version. Bid specifications were sent to BOS Haworth, whom is a member of OMNIA partners, a group contract procurement firm. BOS Haworth is coupled with Snowsound USA providing a unique sole source product in acoustic materials. This material is slimmed down, textured and provides us with acoustic sound dampening for the room.

Has Recommended Bidder Worked for Village Previously       \_\_\_\_\_       Yes       X       No  
If yes, was quality of work acceptable       \_\_\_\_\_       Yes       \_\_\_\_\_       No  
Was item bid in accordance with Public Act 85-1295?       \_\_\_\_\_       Yes       X       No  
Waiver of bids - Public Act 85-1295 does not apply       \_\_\_\_\_       Yes       \_\_\_\_\_       No


**REVIEW (as needed):**

Village Attorney XX \_\_\_\_\_ Date \_\_\_\_\_  
Finance Director XX \_\_\_\_\_ Date \_\_\_\_\_  
Village Manager XX \_\_\_\_\_ Date \_\_\_\_\_

**NOTE: All materials must be submitted to and approved by the Village Manager's Office by 4:30 pm, Wednesday, prior to the Board Agenda distribution.**



August 13, 2024

TO: Scott Niehaus, Village Manager  
TO: Keith Giagnorio, Village President  
THROUGH: Carl Goldsmith, Director of Public Works   
FROM: Scott Neetz, Facilities Supervisor  
SUBJECT: Village Hall Board Room Acoustic Paneling

**BACKGROUND**

As part of the Village's effort to continue maintaining facility improvements/repairs, the project to update the Village Hall Board Room has included updating and replacing the acoustic panels that cover the back wall of the Board Room. The current panels have been abused, sun damaged and with current projects underway gives us opportunity to replace them with an updated version.

Bid specifications were sent to BOS Haworth, whom is a member of OMNIA partners, a group contract procurement firm. BOS Haworth is coupled with Snowsound USA providing a unique sole source product in acoustic materials. This material is slimmed down, textured and provides us with acoustic sound dampening for the room.

Staff is requesting The Village Manger or Village President to be given authorization to award the contract to BOS Haworth and authorize the purchase of acoustic wallcovering in the amount of \$29,945.80

# Budgetary Options 1 for Snowsound Snowall Max Acoustic Wallcovering Panel

Customer Initials

## Proposal

<b>Sold To:</b> Village of Lombard 255 E. Wilson Ave. Lombard, IL 60148	<b>install At:</b> Village of Lombard 255 E Wilson Ave Lombard, IL 60148	<b>Quote #:</b> 79312
<b>ATTN:</b> Scott Neetz Phone: 630-995-1033 Email: neetzs@villageoflombard.org	<b>ATTN:</b> Scott Neetz Phone: 630-995-1033 Email: neetzs@villageoflombard.org	<b>Date:</b> 07/23/2024
		<b>Customer PO #:</b>
		<b>Salesperson:</b> Vince Daddona
		<b>Terms:</b> 50% DEP NET 15

Village of Lombard Snowsound Acoustics Option 1

## Proposal

<b>Total Product :</b>	<b>\$17,940.00</b>
<b>Total Labor :</b>	<b>\$10,750.00</b>
<b>Order Sub-Total :</b>	<b>\$28,690.00</b>
<b>Project Total :</b>	<b>\$29,945.80</b>
<b>Required Deposit 50.00% :</b>	<b>\$14,972.90</b>

# WORKSPACE PROPOSAL

SUBMITTED 08/12/2024



Village of Lombard  
255 East Wilson Avenue  
Lombard Illinois 60148

**BOS** | INSPIRING  
WORKSPACE  
FURNISHINGS

August 12<sup>th</sup>, 2024

Village of Lombard  
255 East Wilson Avenue  
Lombard, Illinois 60148

Subject: Acoustics

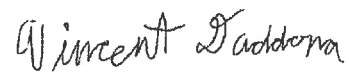
Dear Village of Lombard,

The path to a new workspace is filled with both opportunity and complexity. As you search for the right guide to lead Village of Lombard to success, consider the following criteria that has resulted in exceptional workspaces and exceeded expectations for thousands of our clients over the past 75 years.

- **Complete transparency** in all our dealings so you know where you stand, **lowering your risk.**
- Process-driven and proven **operational excellence leader.**
- Simplifying the complexity of creating a new workplace, **minimizing your time investment.**
- **Cutting-edge technology** ensuring a faster, more efficient project **lowering your cost.**
- **Capable and passionate team** who always has your back.

Your investment in this new space can positively impact your people, your culture and your brand. When this happens, we see our clients' business grow and achieve superior results. We know the formula to turn this potential into reality with you. We value the opportunity to earn your business and we are thrilled to show you why BOS is the best partner for you on this incredible journey.

Thank you,



Vincent Daddona  
Workplace Consultant  
Business Office Systems





## THE BOS DIFFERENCE

### Your Experience Made Better Because of Ours

We know that refreshing your workspace is an important investment, and having furnished thousands of workspaces, the BOS team is uniquely qualified to make your experience the easiest it can be. BOS will guide you every step of the way and for years to come.



#### EASY BUYING EXPERIENCE

Change made easy through customer portals, procurement options & powerful project reporting.



#### INVEST WITH CONFIDENCE

Clear and understandable options. Live Design. Industries best warranties. Purchase with confidence through deep discounting from 350+ leading manufacturers.



#### OPERATIONAL EXCELLENCE LEADER

Trust an experienced team with over seven decades furnishing thousands of workspaces and a proven ability to complete project on time and on budget.



#### WORK WITH EMPLOYEE OWNERS EVERY STEP OF THE WAY

Your experienced team will be supported by our entire organization. No one cares more about your success.



#### UNIQUE & VALUABLE MARKET INSIGHTS

Receive unparalleled access to exclusive research, knowledge and tools.

# COMMITTED TO YOU



**Vince Daddona** *Workspace Consultant • BOS • 708.845.2176*  
*Inspiring Workspaces since 2023*

Vince brings years of expertise in Sales and Account Management to his role, excelling in seamlessly guiding projects. His specialized knowledge in the furniture industry positions him as your dedicated point of contact, ensuring not only timely installations but also a keen understanding of budget constraints. Vince's commitment and seasoned approach guarantee comprehensive and satisfactory outcomes for every project he oversees.



**Michael Lewis** *Senior Project Designer • BOS • 312.573.2324*  
*Inspiring Workspaces since 1994*

Michael boast over two decades of interior design experience, including working as a specialized designer with Haworth furniture dealers since 2000. Passionate about crafting environments that impact daily life, he harmonized functionality, aesthetics, and budget considerations since 1994. Michael aims to create spaces that resonate with clients, inspiring well being and fostering connections, through creativity and meticulous attention to detail whether in cozy offices or vibrant commercial setting.



**Georgia Dobbelaere** *President • BOS • 630.784.7749*  
*Inspiring Workspaces since 1982*

Dedicated to building outstanding client relationships, Georgia directs a team of honest, open, hard-working, fair and reliable workspace experts. She leads the most experienced workspace dealer team in the industry, and her commitment to professional excellence ensures that she consistently delivers exceptional results for her clients.



**Kimberly Sullivan** *Executive Vice President • BOS • 847.757.7821*  
*Inspiring Workspaces since 2008*

Kimberly will work in conjunction with the sales member as an executive leader overseeing the project and team at a high level. Kimberly has a vast knowledge and expertise in a wide variety of manufacturer contracts as well. She can help navigate the manufacturers to make sure pricing is in alignment and the products meet your aesthetic and functional needs.



**George Lucas Pfeiffer** *EVP & Chief Marketing Officer • BOS • 630.779.9733*  
*Inspiring Workspaces since 2007*

As Chief Marketing Officer at BOS and leader of Workspace Digital, George Lucas helps clients leverage the growing number of digital opportunities and technologies to maximize their entire workspace potential, both physical and digital.



**George Pfeiffer** *CEO • BOS Holdings • 630.784.7750*  
*Inspiring Workspaces since 1983*

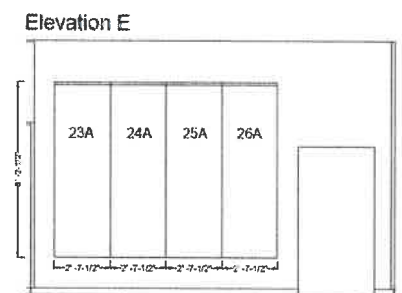
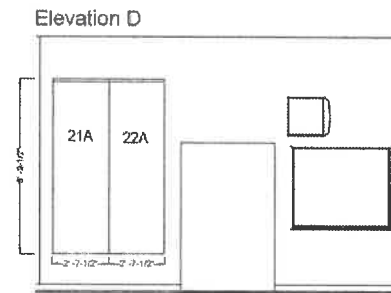
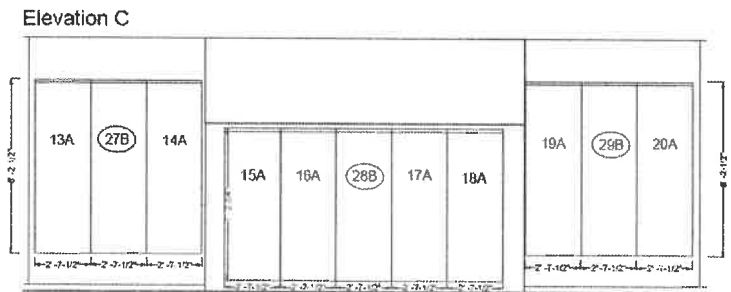
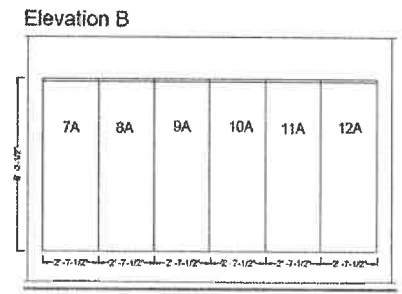
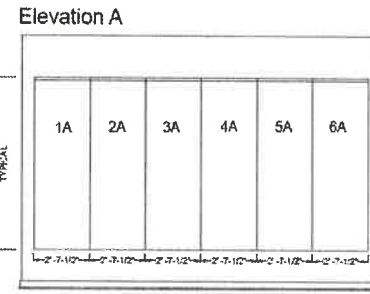
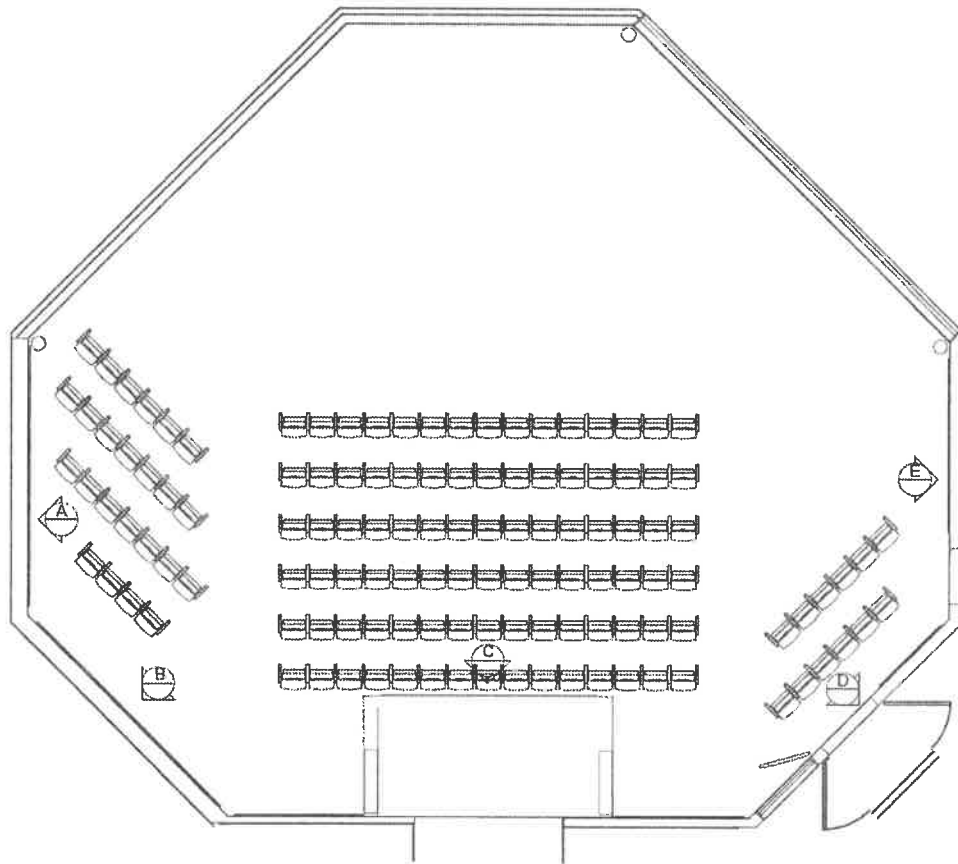
George leads by the BOS core values: Integrity, Inspiration, Commitment. He believes if you do right by your clients, employees, and vendors, they will appreciate the relationship and the investment and will, in turn, do right by you. He ensures that his team embodies these values and that strong, long-term relationships are established with our clients.



Product  
Solution



# FLOORPLAN



## SnowSound Acoustics

Customer Initials



### INVESTING IN BETTER ACOUSTICS:

Please note that all Snowsound Orders cannot be cancelled without the written consent of Snowsound USA. Substantial cancellation/re-stocking charges are applicable.

**With better acoustics:**

- Your employees will be healthier, more productive, and better able to solve complex problems.
- Patients will sleep and heal better, have a stronger immune response to infection and experience lower re-hospitalization rates.
- Students will learn better and teachers will be less stressed.

The reason is the human ear is always listening. To have a healthier, more comfortable space where people can learn, heal and work at their best, improve the acoustics. Install the best acoustic solutions in the industry - Snowsound.

Customer Initials

## PRODUCT DETAILS

### Snowsound Snowall Max Acoustic Wallcovering Panel



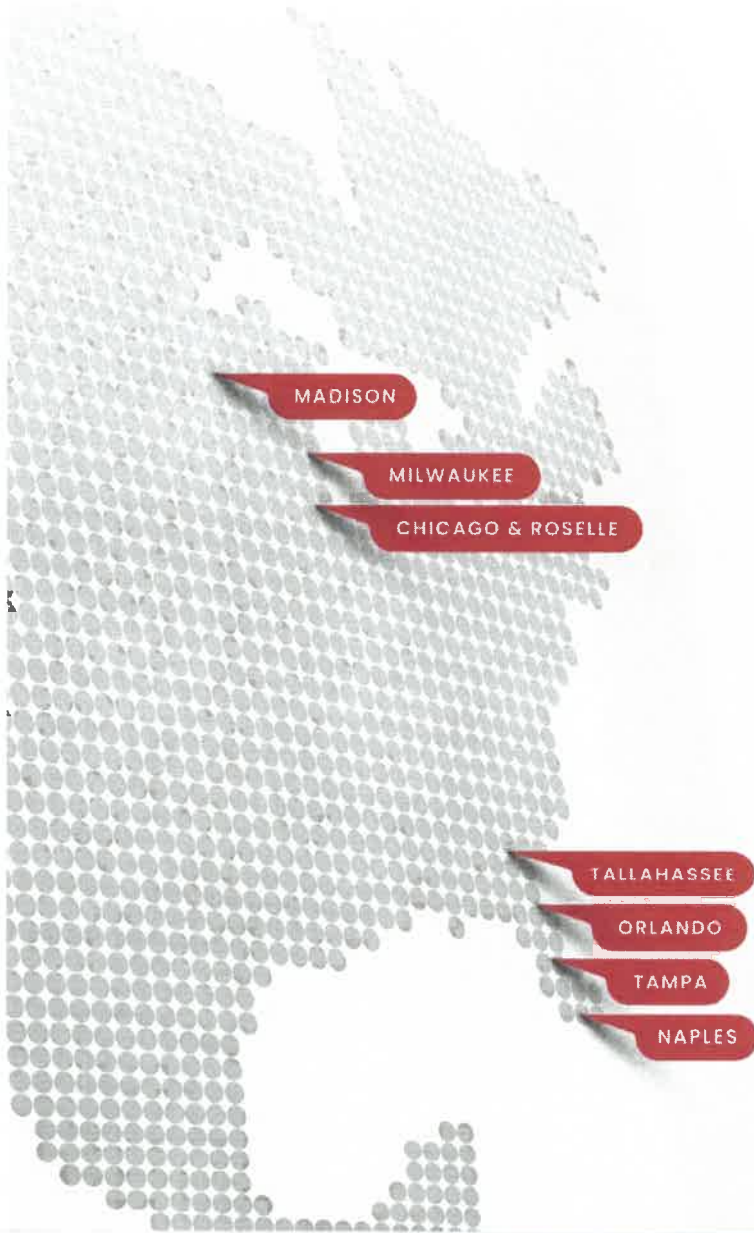
#### **Snowsound Snowall Max Acoustic Wallcovering Panel- Full Roll**

Size-47"W x113.4"H Total 37 Sq. Ft. of  
Material  
Acoustic Felt  
Color – TBD

Finishes



**Company  
Background**



## MEMBERS OF THE BOS HOLDINGS FAMILY



Having created thousands of inspiring workspaces for clients in corporate, government, higher education, healthcare, and hospitality, BOS is a Best in Class, Haworth Preferred Dealer with showrooms, offices and warehouses in Chicagoland, Orlando and Tampa, FL.



AOI offers the Midwest's largest inventory of new, used, and remanufactured office furniture, with an emphasis on Haworth furniture. AOI provides decommissioning, recycling and/or resale of BOS clients' pre-owned furniture. Offices and warehouses in Chicagoland, Milwaukee, and Madison.



Workspace Digital – a division of BOS – is the first full-service technology integrator and digital marketing agency in the commercial interiors industry.



Apex Interior Services is a leading Union office furniture installation firm. In addition to furniture installation, Apex does custom applications for cabinetry, trim work and creative interior elements that blend with the architecture of the space.



**MEET THE BOS FAMILY**  
[www.bos-holdings.com](http://www.bos-holdings.com)



CRANE'S CHICAGO BUSINESS  
**BEST**  
 PLACES TO WORK  
2016 | 2017 | 2018 | 2019

**BOS**  
 Proud to be 100%  
 Employee-Owned

**HAWORTH**  
 A Best in Class Dealer

## THE BOS STORY

**A legacy of operational excellence, ownership and delivering flawless workspaces on time and under budget.**

SINCE  
**1948**  
 DECADES OF  
 EXPERIENCE

Founded in 1948, BOS was the **world's first Haworth Dealer** and remains one of their top dealers globally over seven decades later.

**7**

LOCATIONS  
 IN THE U.S.

Headquartered in Roselle, IL, BOS Holdings also has inspiration centers, offices and warehouses in Chicago, Madison, Milwaukee, Orlando and Tampa. We have **furnished thousands of workspaces** throughout North America.

OVER  
**5M**  
 FURNISHED  
 SQ. FT. PER YEAR

We are proud to be a **100% employee owned ESOP organization** since 2012. Over 1/3 of our team members are degreed Interior Designers!

From design to decommissioning, demountable walls to union and non-union install, project management to digital workplaces, **BOS does almost everything in-house to minimize risk and maximize value.** We call this the 360° experience.

**96%**  
 CLIENT RETENTION

Leverage the **deepest discounting** from 350 of the industry's top manufacturers.

**Cutting-edge technology** powers the comprehensive BOS proACT Process. Leverage space visualization tools, live design, customer portals, workplace discovery solutions and more for your workplace project.

## PROUD TO BE 100% EMPLOYEE OWNED

As a 100% employee owned ESOP organization, no one cares more about your project. Work with an employee owner at every step of the move and procurement process. Mitigate risk and maximize efficiency. We've got your back.

### ESOP COMPANIES...

- **Grow more than 5% faster** (Harvard Business Review)
- **Are 4-5% More Productive** (National Center for Employee Ownership)
- **Have 25% Higher Job Growth** (National Center for Employee Ownership)
- **Are up to 14% More Profitable** (Rutgers)
- **Are 3-4 Time More likely to Retain Talent** (Employee Owner Foundation)

---

Our employee owners look forward to working for you.



# We Lower Your Risk By Doing Everything In House

Only the employee owners at BOS can deliver a true 360° experience.

**360°**  
EXPERIENCE



## FURNISHINGS

- New, Used, & Refurbished
- 350+ Manufacturers
- Volume Discounting
- Home Office Programs

▶ [LEARN MORE](#)



## WORKSPACE CONSULTATION

- Workspace Strategy
- Budget Analyses
- Furniture Standards
- Cohesive Environment

▶ [LEARN MORE](#)



## FURNITURE SPECIALISTS

- NCIDQ & LEED Professionals
- New Space Planning
- Office Reconfigurations
- Guaranteed Specs

▶ [LEARN MORE](#)



## PROJECT MANAGEMENT

- Acknowledgement & Site Condition Reviews
- Timeline Management
- Product Orientation
- Punch-List Resolution



## INSTALLATION SERVICES

- Union & Non-Union
- Professional Carpentry
- Multi-Manufacturer
- Architectural Solutions

▶ [LEARN MORE](#)



## DECOMMISSIONING & TRADE-IN

- Fleet of Trucks
- Decommissioning Specialists
- Resale & Blending Capabilities
- Trade-In Opportunities

▶ [LEARN MORE](#)



## LEASING & RENTAL

- Short & Long Term Rentals
- Rent-to-Own Options
- Fair Market Price
- Haworth Payment Solution Leasing Program



## ASSET MANAGEMENT

- Asset Appraisals
- Inventory Management
- Warranty Management
- Product Maintenance
- Bar-Coding



## WAREHOUSING

- 150,000 SFT Facility
- Climate Controlled
- Delivery & Receiving
- Long & Short-Term Storage

▶ [LEARN MORE](#)



## WALLS

- Walls Strategy & Consultation
- Dedicated Walls Team
- New Installations & Reconfigurations
- Manufactured in USA



## TECHNOLOGY INTEGRATION

- Audio Visual Solutions
- Sound Masking
- Digital Space Planning
- Sensors
- Collaboration Technology

▶ [LEARN MORE](#)



## CULTURE & CHANGE COMMUNICATION

- Work Culture Discovery & Promotion
- Space Tours & Showcases
- Workspace Signage & Branding
- Digital Marketing Agency





# WORKSPACE DIGITAL

## GET DIGITAL

In the modern workplace, digital spaces promote culture, productivity, attraction and retention. Workspace Digital is the first full-service technology integrator and digital marketing agency in the commercial interiors industry. Align your physical and digital spaces today.

### TECH

Leverage our full service technology integration capabilities and connect your spaces and teams with the right solutions for your business.

- *AV Consulting*
- *Asset Inventory*
- *Design & Engineering*
- *Video Conferencing*
- *Audio Solutions*
- *Wireless Charging*

### AGENCY

From consulting and training to project-based and fully-managed solutions, Workspace Digital offers a full range of brand, marketing & creative solutions.

- *Dynamic Websites*
- *Digital Signage*
- *Content Marketing*
- *Video & Photography*
- *Brand Identity*
- *And More*



**EXPLORE WORKSPACE DIGITAL**  
[www.workspace.digital](http://www.workspace.digital)

# WE'LL TAKE CARE OF YOUR EXISTING FURNITURE

BOS In-House Decommissioning is part of our promise to deliver a 360° Experience, where you're provided maximum value and minimum risk through a turnkey solution that results in a complete, integrated project deliverable.

With a vast network of brokers, nationwide showrooms, and our new 200,000 square foot, climate-controlled warehouse in Roselle, IL, we can prevent most decommissioned furniture from going into a landfill.

- 200,000 Square Foot Climate Controlled Warehouse
- Fleet of trucks in Illinois, Orlando and Tampa
- In-House Union and Non-Union Installation Teams
- Decommissioning Specialists On Staff
- Resale, Refurbishing and Blending Capabilities for Best Value
- BOS diverts between 4 and 5 thousand workstations or private offices (totalling over 1,380 tons) from landfills every year.



**LEARN ABOUT BOS DECOMMISSIONING**  
[www.bos.com/decommissioning](http://www.bos.com/decommissioning)



# Sustainability Cycle



LEARN MORE ABOUT  
THE BOS SUSTAINABILITY CYCLE

[www.bos.com/about/sustainability/](http://www.bos.com/about/sustainability/)



## OUR APPROACH

The BOS team works hard to be good environmental stewards. From helping our clients to create more sustainable spaces to our strong partnership with Haworth, the industry leader in LEED solutions, BOS is committed to offering greener products and services. We live this commitment daily by employing our own internal sustainability initiatives. These include recycling programs for paper and computers, consolidating our deliveries to be as efficient as possible, and building sustainability into our corporate mission. From our corporate policies to the lifestyle choices of our team, sustainability matters at BOS.

## OUR IMPACT



**5,000+**

Workstations and Private Offices Diverted from Landfills Yearly

- 2.76 Million Pounds of Furniture
- 8 Million Pounds of Natural Resources Saved
- 7 Million Pounds of Co2 Waste Prevented from Entering the Earth's Atmosphere
- Energy Saved Could Power 1,056 American Homes for a year



**ALL**

Cardboard and White Paper Recycled



**500**

Tons of Metal Recycled Yearly



**NEW**

Product Packaging is Reused



**80%**

Used Furniture Brought into Our Warehouse is Sold



# 350+ Top Manufacturing Partners

## SYSTEMS

AIS  
Haworth  
Inscape  
Paradigm  
Tayco

## ACCESSORIES

Claridge  
Delfecto  
Doug Mockett  
Egan  
Magnuson Group  
Peter Pepper  
Safco  
Systems 290  
The Mail Store

## CASEGOODS

AIS  
Bernhardt  
Darran  
Gianni  
Global  
Groupe Lacasse  
Halcon  
Haworth  
Indiana Furniture  
IOF  
JSI  
Krug  
Mobilia  
Nucraft  
National  
OFS / First Office  
Patrician  
Storlie Company  
Tuohy

## WALLS & FLOORS

Haworth Ai

## CONFERENCE & TRAINING

AIS  
Bernhardt  
Coalesse  
Davis  
Enwork  
Encore  
Falcon  
Furniture Lab  
Global  
Groupe Lacasse  
Halcon  
Haworth  
HBF  
Indiana  
Furniture  
JSI  
KI  
Krug  
Mobilia  
National  
Nevers  
Nienkamper  
Nucraft  
OFS  
Prismatique  
Safco  
Special T  
Surface Works  
Versteel

## ERGONOMICS

Conset  
ESI  
Ergo Systems  
Global  
Humanscale  
Intelliaspace  
Legrand  
Right Angle  
SpaceCo  
Workrite

## FILES & STORAGE

AIS  
Aurora  
DeskMakers  
Flaking  
Global  
Great Openings  
Groupe Lacasse  
Haworth  
Holiman Lockers  
Invincible  
KI  
Kwik File  
Office Specialty  
Schwab  
Tennsco  
Virco

## HEALTHCARE

Brayton  
Carolina  
Cabot Wrenn  
David Edward  
Global  
Group Lacasse  
Haworth  
High Point  
Intensa  
ICA  
KI  
Krug  
LaZBoy  
Nemschoff  
Neocase  
Softcare  
Stance  
Thonet  
Wieland  
Unicell

## TRADING FURNITURE

Nova  
R&D Data Products

## LOUNGE & SEATING

9 to 5  
Allermuir  
Bernhardt  
Brayton  
Cabot Wrenn  
Cassina  
Capellini  
Coalesse  
David Edward  
Davis  
EKO Encore  
Furniture Lab  
Global  
Groupe  
Haworth Collection  
Halcon  
Haworth  
HBF  
ICF Group  
Keilhauer  
JSI  
KI  
Krug  
Lazyboy  
Martin Bratrud  
National  
OFS  
Poltrona Frau  
Sironit  
Source  
International  
Stylex  
Thonet

## SOUND MASKING

SMG

## LIGHTING

Artemide  
Humanscale  
Light Corporation  
Luxo  
Nessen

## TASK SEATING

AIS  
9 to 5  
Allseating  
Chairworks  
Global  
Haworth  
Humanscale  
Keilhauer  
Krug  
National  
OFS  
Safco  
Sit On It  
Tayco  
United Chair  
Via  
Virco

## TEXTILES & LEATHER

Arc-Com Fabrics  
Architex  
Bernhardt Textiles  
Carnegie  
Cf Stinson  
Designtex  
Garrett Leather  
HBF Textiles  
Knoli Textiles  
Luna  
Loom  
Maharam  
Mayer Fabrics  
Momentum  
Pallas  
Sina Pearson  
UltraFabrics  
Unika Vaev



Making It  
Happen



# Path to Success

Combining People, Technology, and Process to Deliver a Successful Integrated Project Deliverable.

LEARN MORE ABOUT OUR PROCESS ▶

**1 DISCOVER**  
 The journey begins by listening and learning about your company's needs and culture. This is also where we define project requirements, develop timelines, and set Service Level Expectations.

**FEATURED TECHNOLOGIES**  
 Compass Workspace Discovery, Freespace, Yulio

**3 PREPARE**  
 The 3rd step involves getting the space ready, confirming details such as building conditions, power locations, measurements, and zone tagging.

**FEATURED TECHNOLOGIES**  
 Smartsheet, PlanGrid

**5 INSTALL**  
 After verifying accuracy of the product, the installation begins, accompanied by daily progress reports. Afterwards, trash is removed and – if applicable – old furniture is decommissioned.

**FEATURED TECHNOLOGIES**  
 LYNX, IMS, MOSS

**2 GUIDE**  
 Next, we will be guiding you through the process of exploring layouts and furniture, often with the help of virtual renderings, 360° tours, and Design in Real Time.

**FEATURED TECHNOLOGIES**  
 Bluescape, Canvas, Sketchfab

**4 PROCURE**  
 Now it's time to order the product. We'll review acknowledgements for accuracy and ship dates and give you real-time access to all order documents.

**FEATURED TECHNOLOGIES**  
 CORE Customer Portals, Service Dashboards

**6 SERVE**  
 The final step involves Day 2 site activation for product usage, warranty and maintenance programs, post occupancy surveys, custom customer portals with resources, eprocurement options, and more.

**FEATURED TECHNOLOGIES**  
 CEROS, VIP Portals, Private Custom Websites

TEAM OWNERSHIP

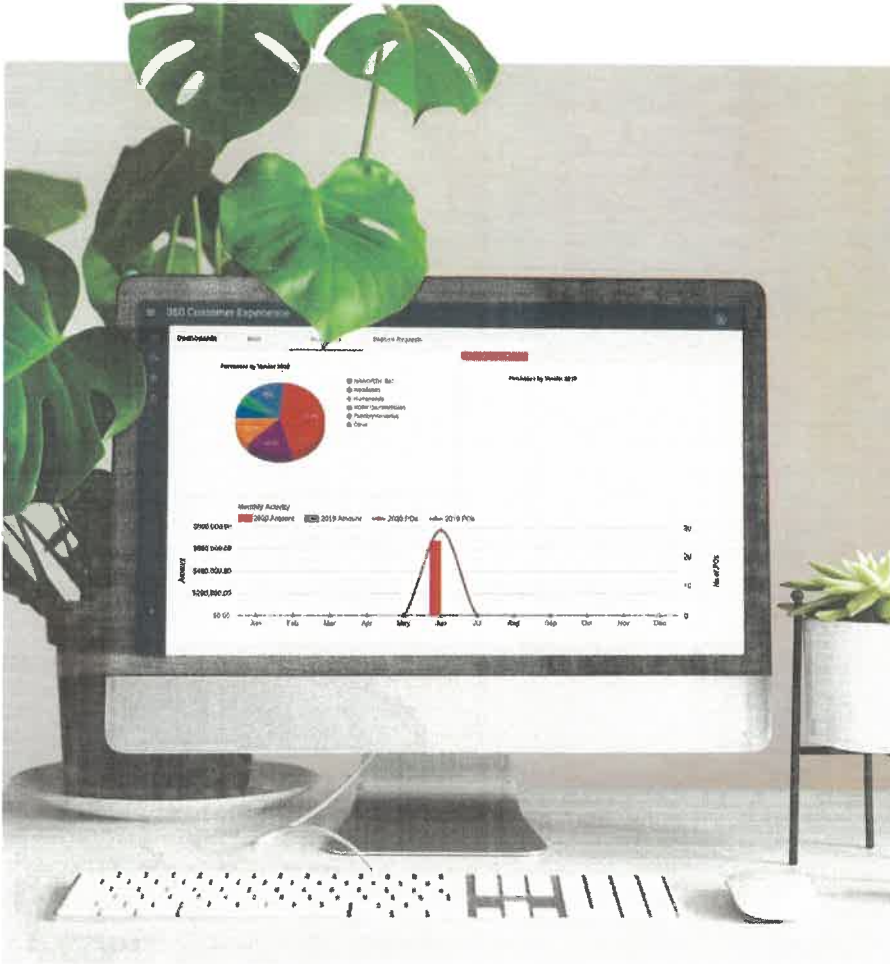
KEY CONTACT

PROJECT DESIGNER

PROJECT COORDINATOR

INSTALLATION TEAM

CUSTOMER SERVICE



# CUSTOMER PORTAL

Everything At Your Fingertips.

The tried and true BOS proACT process is now powered by the industry's most cutting edge technologies to make the move and procurement process faster, smarter and more effective than ever before.

Real-time, instant access to proposals, active orders, service requests, invoicing, drawings, and data online and sent to your inbox so that you can stay in the know every step of the way.

## ONLINE PORTAL

Everything in one place with live tracking and on demand access.

## PUNCHLIST RESOLUTION

A faster process that's easy and efficient to manage while eliminating human error.

## PROGRESS REPORTS

Receive visual report updates sent straight from the job site to your email.



**TAKE A TOUR**  
[www.bos.com/portal](http://www.bos.com/portal)



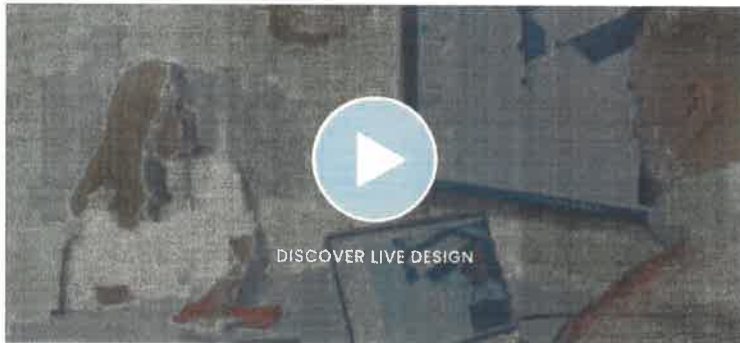


## LIVE DESIGN

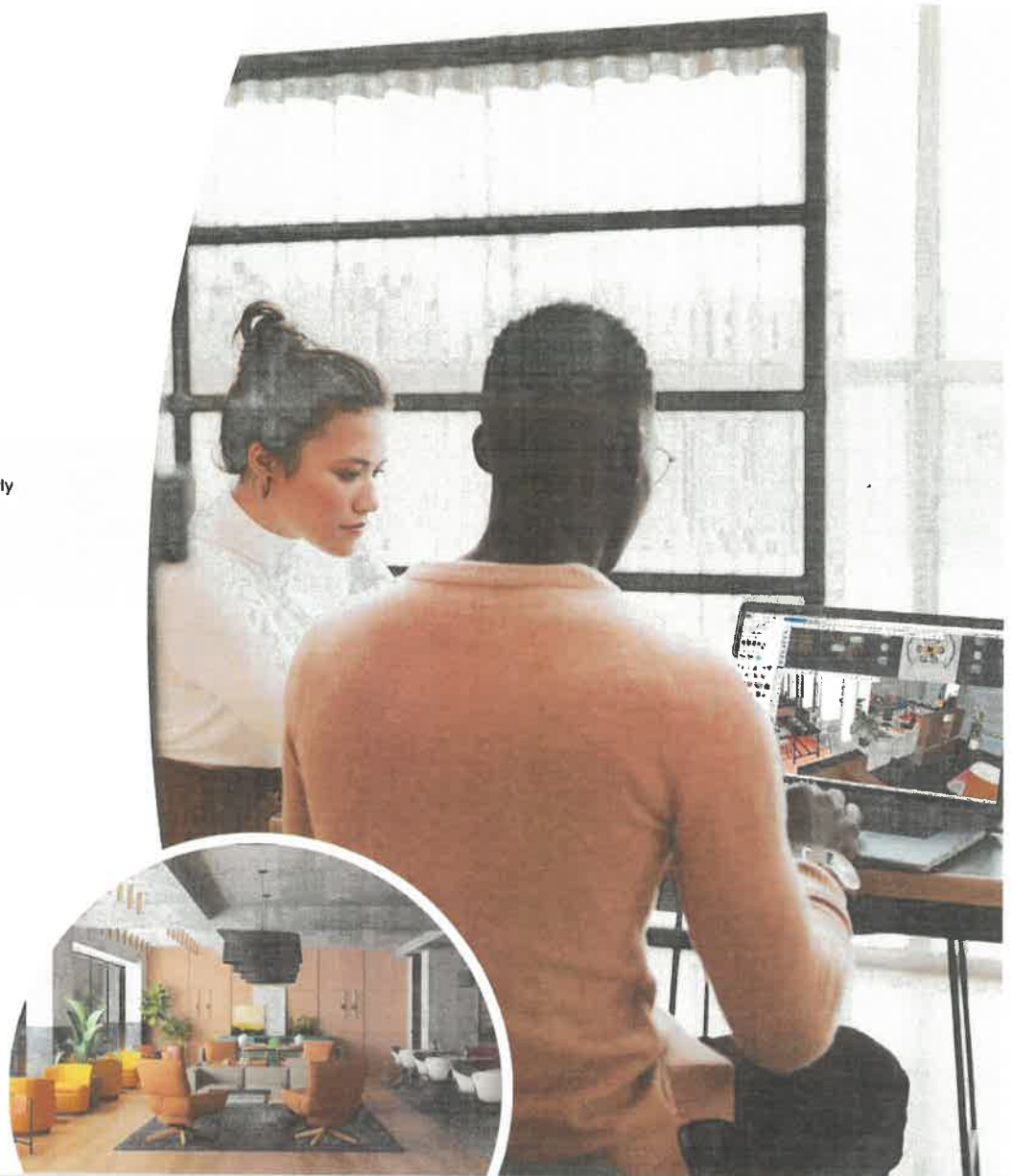
Take part in the creation of your workspace.

Industry-leading technology and the best designers in commercial interiors, Live Design by BOS offers speed, efficiency, confidence and savings in an immersive experience where clients and stakeholders collaborate in the space planning and furniture selection process with a design professional.

- Realistic 3D Space Visualization
- Save Weeks On Your Next Workspace
- Straight-Forward Product Pricing & Visibility
- Compare Styles, Colors & Options Instantly
- Informed Decisions in Real Time
- In-Person Or Remote Design Sessions



[www.bos.com/livedesign](http://www.bos.com/livedesign)





# OPERATIONAL EXCELLENCE

**On Time. On Budget. Exceeding Expectations.**

Our goal is to create a high-performing workspace your team will love and to execute a flawless project that delights all stakeholders. As operational excellence leaders in the commercial interiors space, we earn the trust of our clients through exceptional performance, minimal punch list and accountable and resolution when challenges occur.

- We minimize risk by doing almost everything in-house by employee owners.
- Our size, experience and stability allows us to insulate your project from problems.
- Change management and risk mitigation plans in place for every project.
- Long-term, relationship-based approach founded in integrity and commitment to client.
- Tried and True proACT process powered by industry-leading technology.
- 200,000 Square Feet of warehouse and operations in IL.
- In-House Installation, Walls, Technology, Delivery, Warehousing and Decommissioning

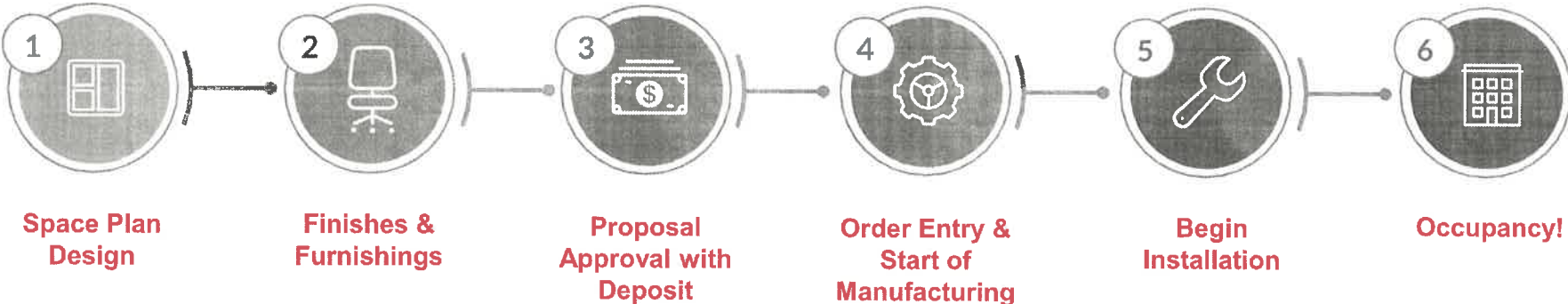


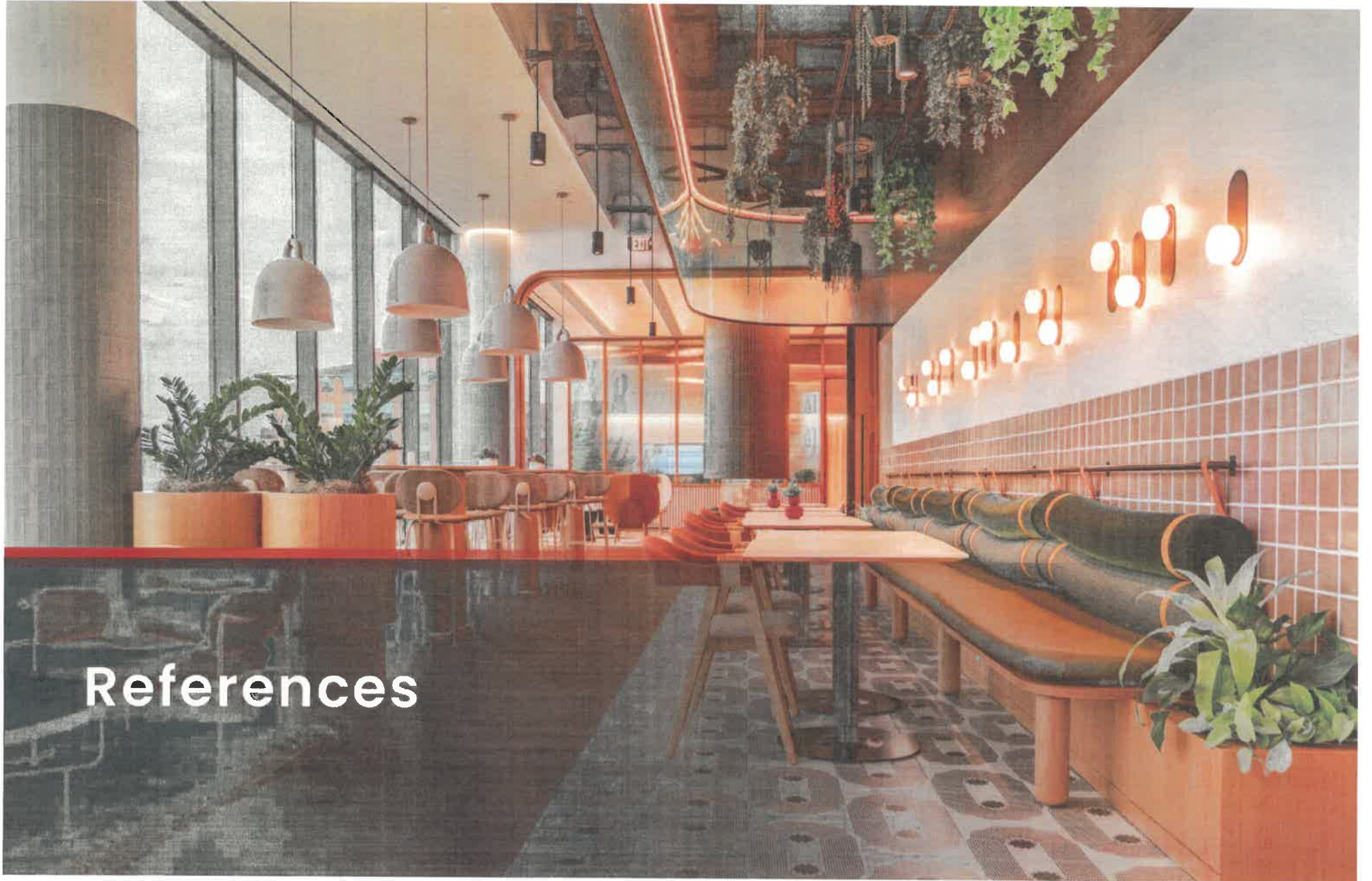
**LEARN MORE**  
[www.bos.com/operations](http://www.bos.com/operations)



# TIMELINE

## KEY MILESTONES





## References

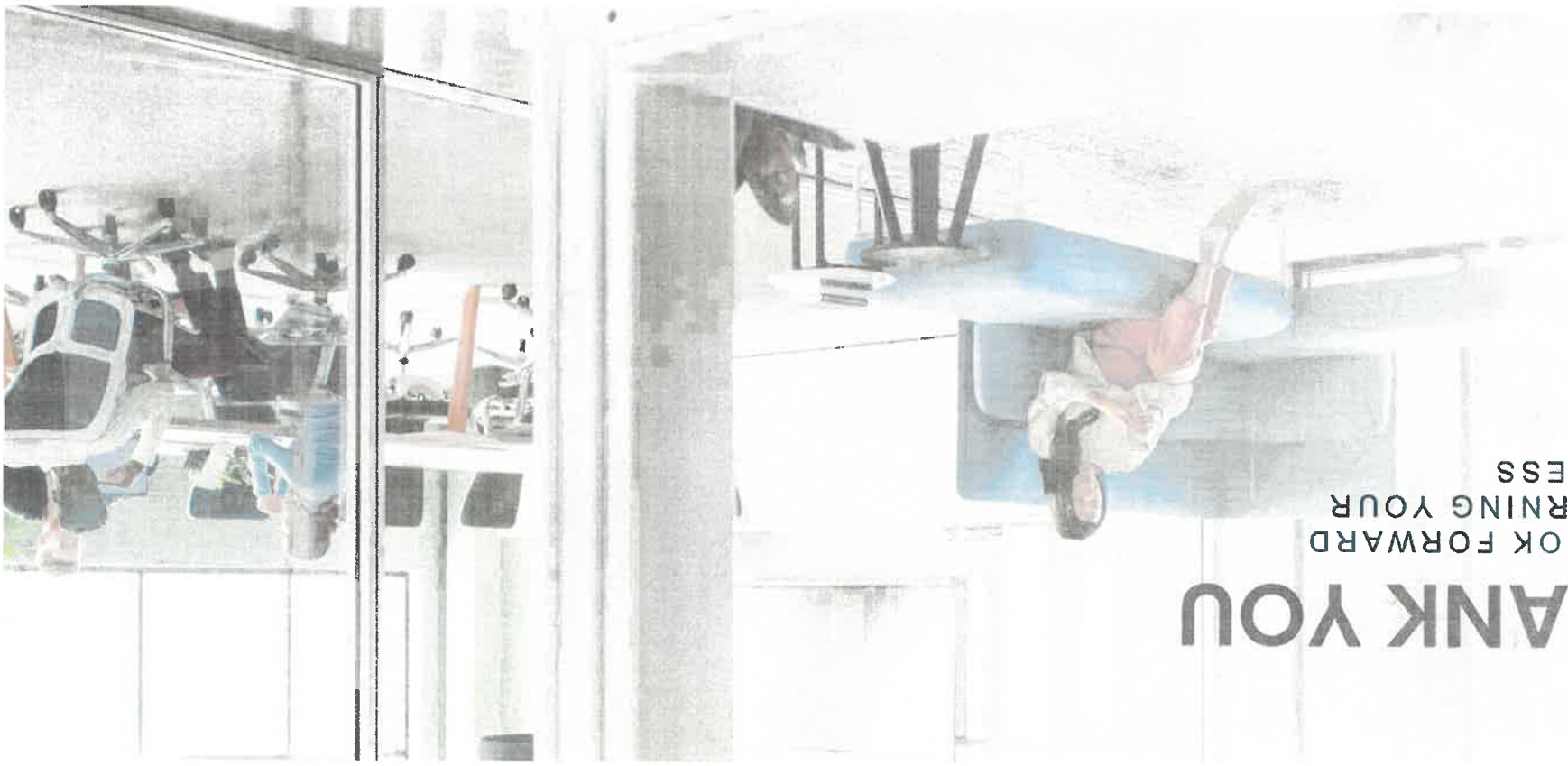
# We Value Lasting Partnerships

BOS creates long-term value by developing positive client relationships, many of which have lasted 15 years or longer.





**THANK YOU**  
WE LOOK FORWARD  
TO EARNING YOUR  
BUSINESS



**HAWORTH**  
A Best In Class Dealer



Proud to be 100%  
Employee-Owned

Be inspired at [bos.com](http://bos.com)

**ROSELLE HEADQUARTERS**  
501 South Cary Avenue  
Roseville, IL 60172  
637.267.0077

**CHICAGO SHOWROOM**  
325 N. Wolfe St., 11th Fl.  
Chicago, IL 60654  
312.670.8530

**BOS ORLANDO**  
200 Technology Park  
Lake Mary, FL 32749  
407.805.9918

**BOS TAMPA**  
1600 East Eighth Ave., Ste C-251  
Tampa, FL 33605  
813.649.7310

PORTLAND • CHICAGO • WILMINGTON • TAMPA • MIAMI • MIAMI • MIAMI