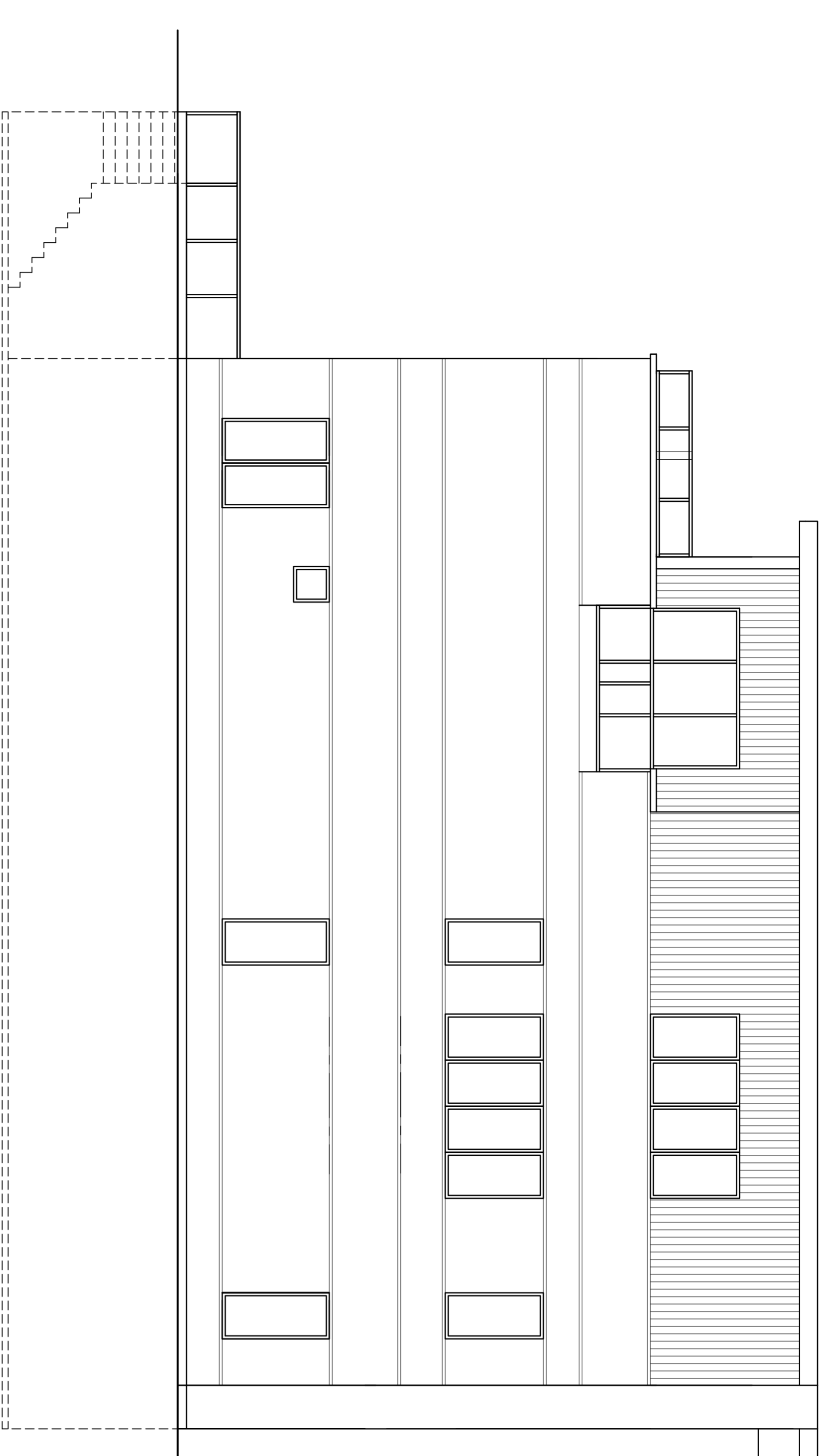
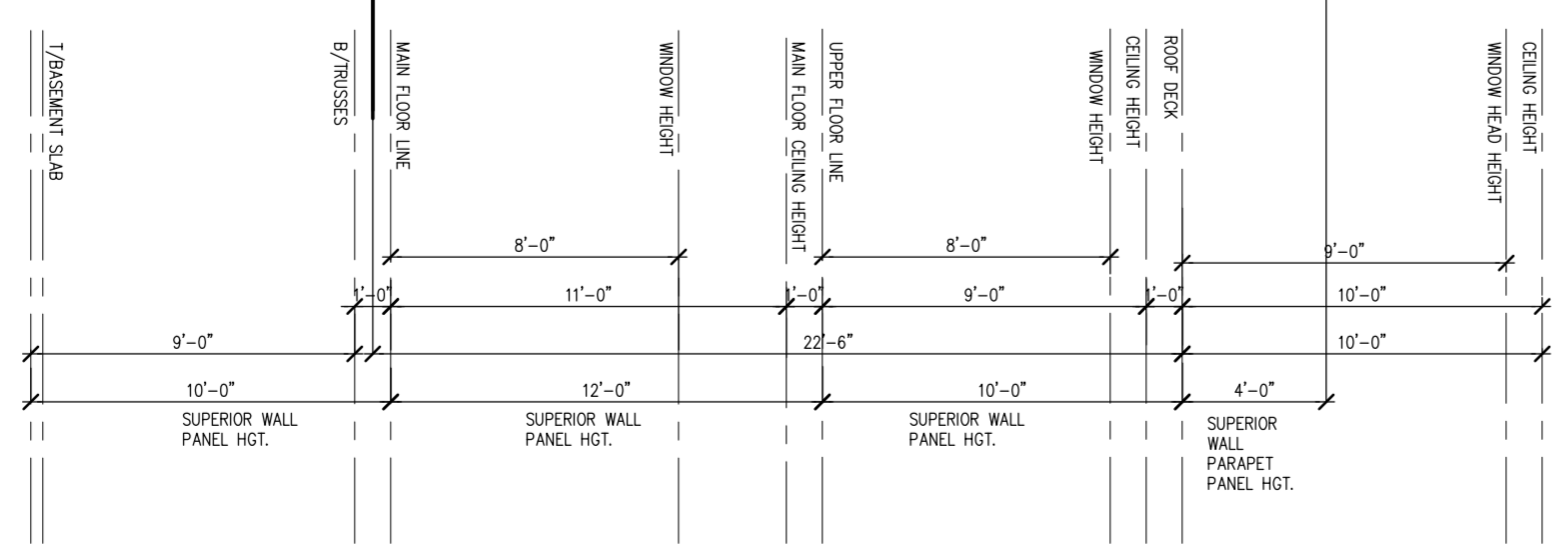
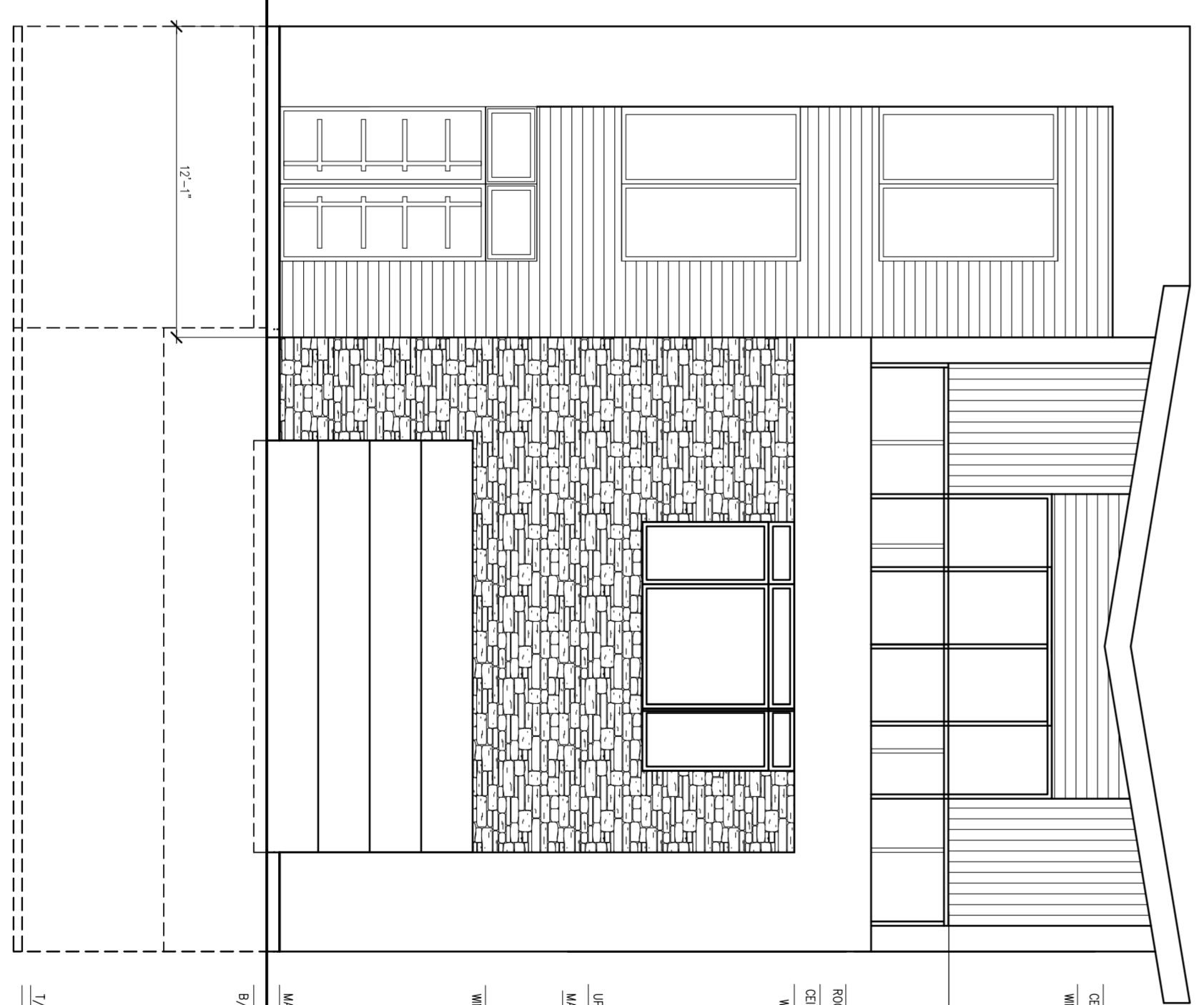


8'-0"
4'-0" 2'-0"

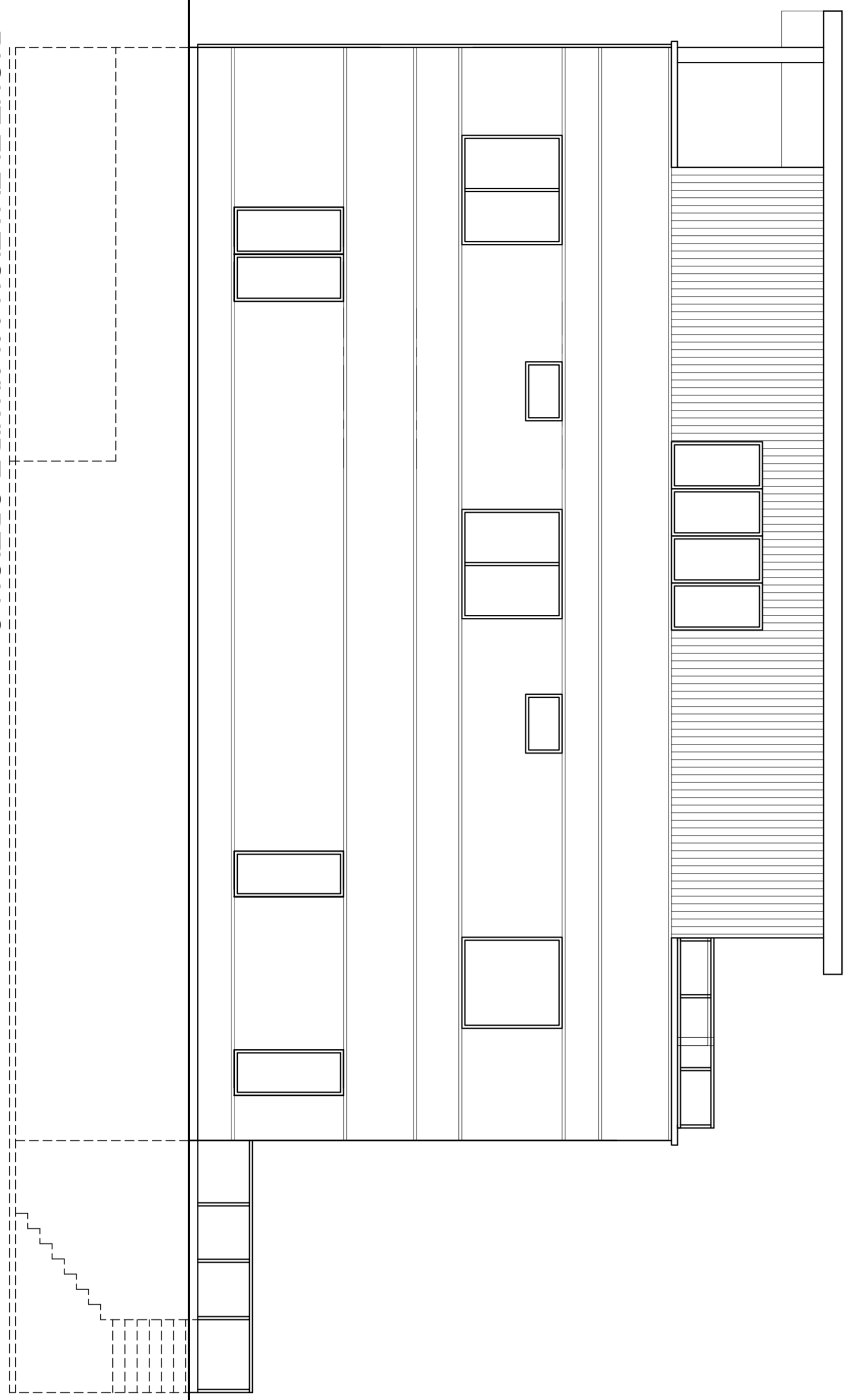
REAR ELEVATION 36'-0" WIDE OPTION C
SCALE: 3/16" = 1'-0"



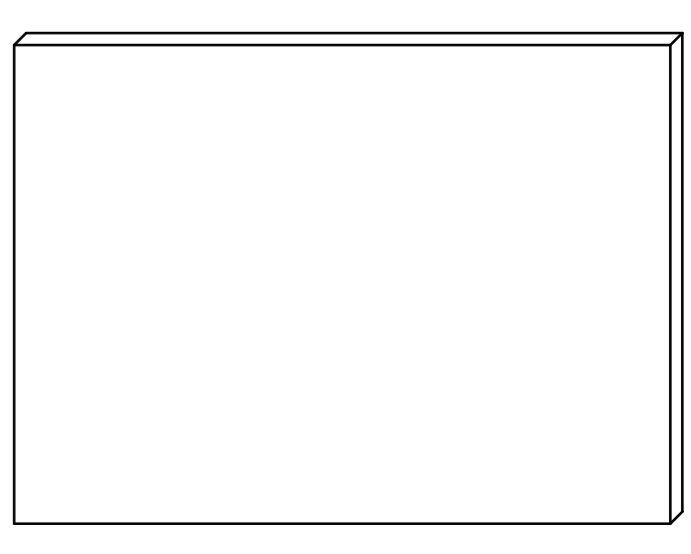
LEFT ELEVATION 36'-0" WIDE OPTION C
SCALE: 3/16" = 1'-0"



FRONT ELEVATION 36'-0" WIDE OPTION C
SCALE: 3/16" = 1'-0"



RIGHT ELEVATION 36'-0" WIDE OPTION C
SCALE: 3/16" = 1'-0"



© Copyright 2016
JAKI BRANDIS ARCHITECTS, LTD.
ALL RIGHTS RESERVED. NO PART OF
THIS DOCUMENT MAY BE REPRODUCED
OR USED FOR ANY PURPOSE WITHOUT WRITTEN PERMISSION
FROM JAKI BRANDIS ARCHITECTS, LTD.

jb
 JAKI BRANDIS ARCHITECTS, LTD.
 ARCHITECTS LTD.
 LICENSE NO. 184.007832
 1800 W HAWTHORNE
 LANE SUITE 0
 WEST CHICAGO,
 ILLINOIS 60109
 PH: (630) 597-2561
 FAX: (630) 592-2370

NEW SINGLE-FAMILY HOMES
AFSAR DEVELOPERS LLC.
 LOMBARD, IL
 DUPAGE COUNTY

ISSUE	DATE

SHEET TITLE
BUILDING ELEVATIONS
 OPTION C

SHEET NUMBER
A-1-C
 OF