

## Potential sign locations and topics for the Great Western Trail

1. Main Street
  - Depot location
  - Overview of CGW Railway
  - Train timetables
2. Grace Street
  - Former location of Lombard Floral
  - Sheldon Peck home visible to the south
  - Two CGW bridges here -- one over Grace Street and one over the C & NW/Union Pacific tracks. (They were in the same location as the current bridges for the Great Western Trail).
3. Park Ave.
  - Former abutments for train bridge over Park Ave.
  - Communication poles (telegraph/telephone) visible to the west
  - Great Western as a corridor both past and present (train, water, gas, phone, telegraph, walkers, bikers, ...)
  - Site of a 1940 train derailment along the C G W (another derailment was at Grace St. in 1947. That one included a picture in the newspaper.)
4. Charlotte St.
  - Former location of Louis Heineke's feed store
  - Former location of Alexander Lumber Yards (one of three in area. Other two were between C & NW tracks and St. Charles)
  - Sidings on the C & GW, including one used for a home

### Other possible topics:

- Varying widths of CGW right-of-way (with explanation?)
- History of Great Western Trail creation
- Four oldest homes near CGW and Main Street

### Questions about sign (and website?) content:

1. All of the signs on the Prairie Path contained the same map of the railroad with Lombard Stations identified. Should the CGW signs also all include a map or another graphic that is the same on each sign? If so, what would that be? CGW logo? other?
2. Will the CGW signs include a QR code and link to a website? If so, should information at the website link for each sign be unique or should some information be repeated? (Signs/ website information viewed as "stand alone," "parts of a whole," or both?)
3. If the signs include a link to a website, I am thinking that the text on the signs would relate to the graphics on the sign. The text on the website linked to that sign would provide more detail about the content on the sign and perhaps include other information not shown graphically. Is that a good/workable overall framework?

Link to Prairie Path signs information:

<https://villageoflombard.org/378/CAE-Rail-Chicago-Aurora-Elgin-Railroad>

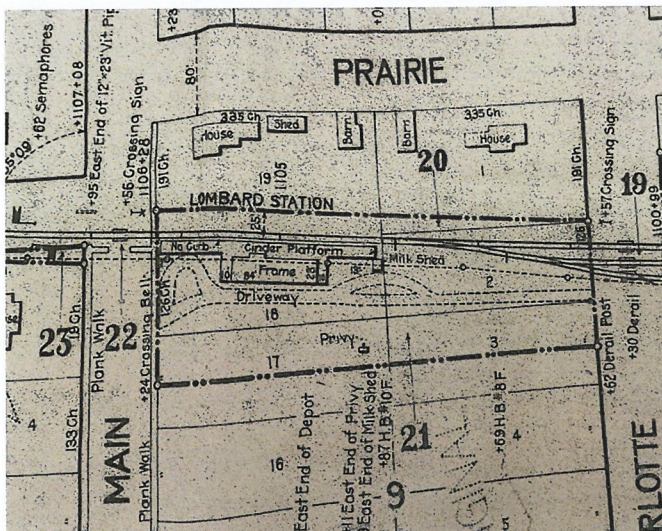
## Possible graphics for signs along the Great Western

### At Main Street:

1. 1949 Picture of the Station that once stood on this site. View is looking from Main Street to the Southeast (Pix is at LHS)



2. Portion of the 1916 Chicago Great Western map of Lombard (Add portion of the map to the west that shows homes and Sherman Street) (Photo is from copy at Regional History Center at NIU).



3. C G W Timetable (from Regional History Center at NIU in DeKalb) They have timetables for 1903-1908; 1922-1926; 1928-1929

# CHICAGO GREAT WESTERN RY.

## EASTERN DIVISION TIME TABLE NO. 15.

TAKES EFFECT SUNDAY, JUNE 28TH, 1903, AT 12:01 O'CLOCK, P. M.

ALL RULES AND INSTRUCTIONS CONTAINED HEREIN SUPERSEDE ALL RULES  
AND INSTRUCTIONS INCONSISTENT THEREWITH.

THIS TIME TABLE IS FOR THE GOVERNMENT AND INFORMATION OF EMPLOYEES ONLY. NOT FOR THE PUBLIC.

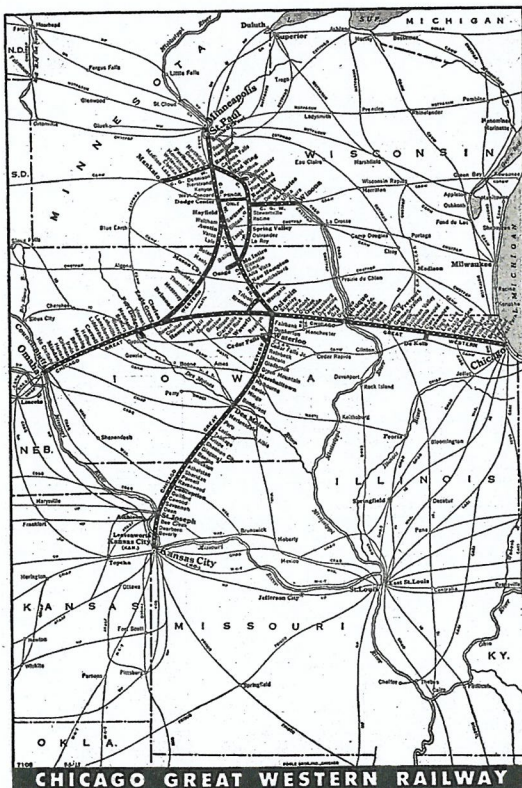
WEST BOUND TRAINS ARE SUPERIOR TO EAST BOUND TRAINS OF THE SAME CLASS.

WEST BOUND.										Station Numbers Miles from St. Paul	TIME TABLE NO.  STATIONS
THIRD CLASS.			SECOND CLASS.	FIRST CLASS.							
	81 WAY FREIGHT Daily Ex. Sunday	73 NORTH WEST TIME FREIGHT Daily	61 SOUTH WEST TIME FREIGHT Daily		11 SUBURBAN Daily Ex. Sunday	9 MAIL Daily	7 LOCAL Daily	5 EXPRESS Daily	1 LIMITED Daily		
					P. M.—L. 5.35	A. M.—L. 8.45	P. M.—L. 3.10	P. M.—L. 11.00	P. M.—L. 6.30	426	CHICAGO.....
											7.9
					* 5.55	9.02	f 3.31	f 11.20	6.47	417	CENTRAL AVENUE.....
											2.5
	* 9.45 *	9.05 *	6.10		* 6.06	f 9.05	f 3.36	11.25	6.50	415	FOREST HOME.....
											End of Double Track—Inter
											1.3
	* 9.55	9.10	6.13		* 6.09	f 9.08	f 3.39	f 11.27	6.53	414	MAYWOOD.....
											1.5
	* 10.05	9.15	6.18		6.12	9.10	3.42	11.30	6.55	412	BELLEWOOD.....
											6.1
	* 10.30	9.24	6.20		f 6.18	f 9.16	* 3.50	f 11.36	7.02	408	SOUTH ELMHURST.....
											Th. Cosh. Crossing—Inter
	* 10.50	9.35	6.35		* 6.26	f 9.23 *	* 3.58	f 11.42	7.08	406	LOMBARD.....
											4.1
	* 11.00				f 6.31	f 9.26	* 4.04	f 11.46		402	NO. GLEN ELLYN.....
											2.2
	* 11.15	9.48	6.45		* 6.35	f 9.29	* 4.11	f 11.50	7.15	400	GRETNNA.....
											3.7
	* 11.30 AM	9.58	6.54		f 6.44	f 9.36	* 4.20	f 11.58 PM	7.22	395	INGALTON.....
											5.2
	* 12.10 PM	10.16	7.07		* 6.54	* 9.44	* 4.41	* 12.06 AM	* 7.29	390	ST. CHARLES.....
											5.2

4. Ad from CGW in 1906 (LHS)



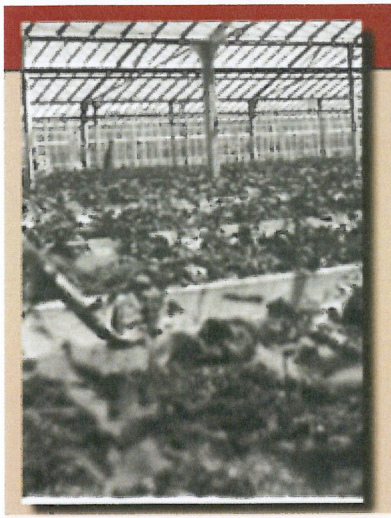
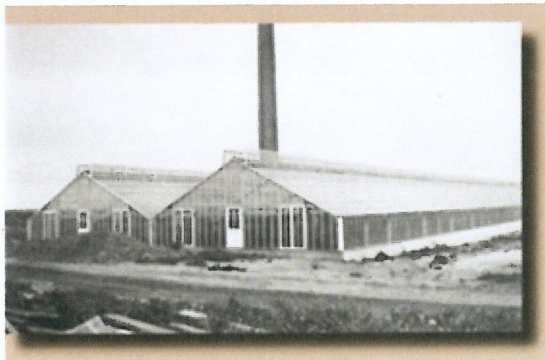
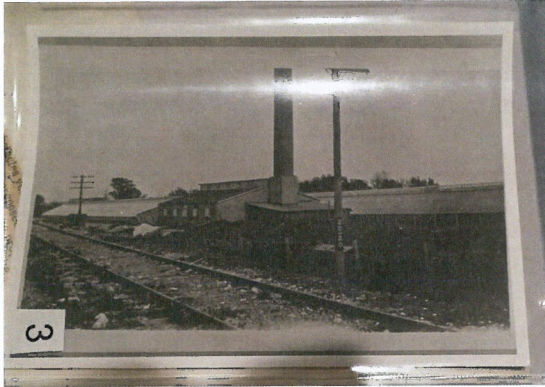
5. Map of Chicago Great Western System



Map from: [Chicago Great Western Railway: Map, Roster, Photos, Logo \(american-rails.com\)](http://american-rails.com)

## At Grace Street

1. Pictures of Lombard Floral. This used to be at the site of the current Lombard Post Office. I think their property extended as far east as Grace Street where they had a retail outlet. (Would need to check on that fact at the LHS). (Pictures from LHS)



Picture of intersection of Grace and St. Charles with Lombard Floral smokestack in background. Retail outlet in foreground. (Picture at LHS)



2. Picture of Sheldon Peck Home (Picture at LHS)



3. Picture of CGW bridge over C&NW tracks

a. Picture of Chicago Great Western bridge over the Chicago Northwestern tracks  
(Picture from: [The Unofficial Chicago Great Western Page](#) )

"Westbound Train 143 crosses the single-track bridge that spans the Chicago & North Western in Lombard, IL. In a few years, both lines will be property of the C&NW. Photo Copyright 1998 Herron Rail Video."



- b. Picture of Metra Train passing beneath the Great Western Bridge – taken from same vantage point as the previous picture (Picture from Source: Northwestern Lines, No. 4, 2014. Photo by Mike Blaszak)



A westbound Metra approaches the station in Lombard on May 28, 2014 as it passes beneath the former Chicago Great Western line. The new bridge over the UP/Metra line was completed in 2012 and is now part of the Chicago Great Western Trail. Metra had purchase of service agreements with C & NW and now with the Union Pacific to use their lines, but they own the stock and maintain the stations along the line.

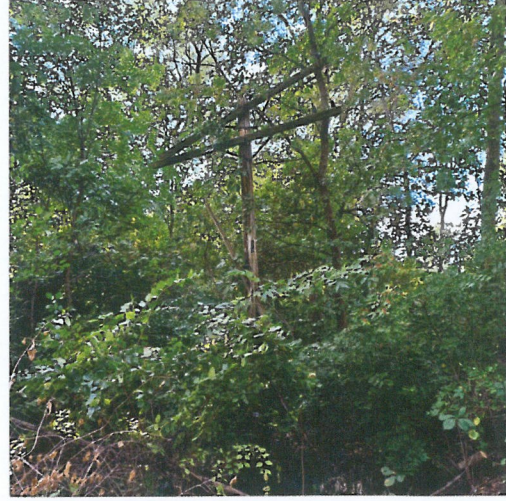
4. Picture of intersection of Grace Street, St. Charles Road, and Parkside Avenue looking north with CGW bridge over Grace Street in the distance. (Photo at LHS and on the last page of the CGW walking tour)

**At Park Ave.**

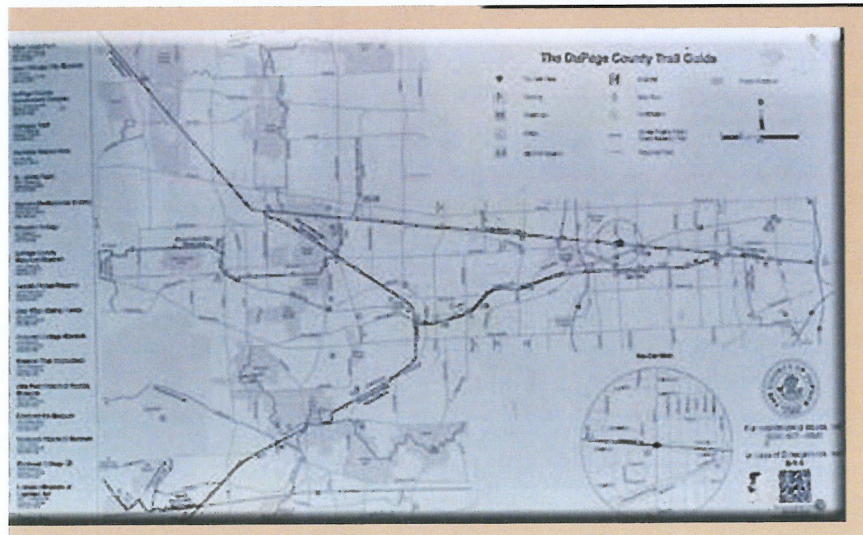
1. Pictures of the abutment along the CGW at Park Ave. Top photo is looking west.  
Bottom photo is looking east. (Photos at the LHS)



2. Pictures of communication poles (Photos I took of pole at Elizabeth Street Crossing)



3. Map of Bike Trail in DuPage Co. (Photo I took of a sign on the path)

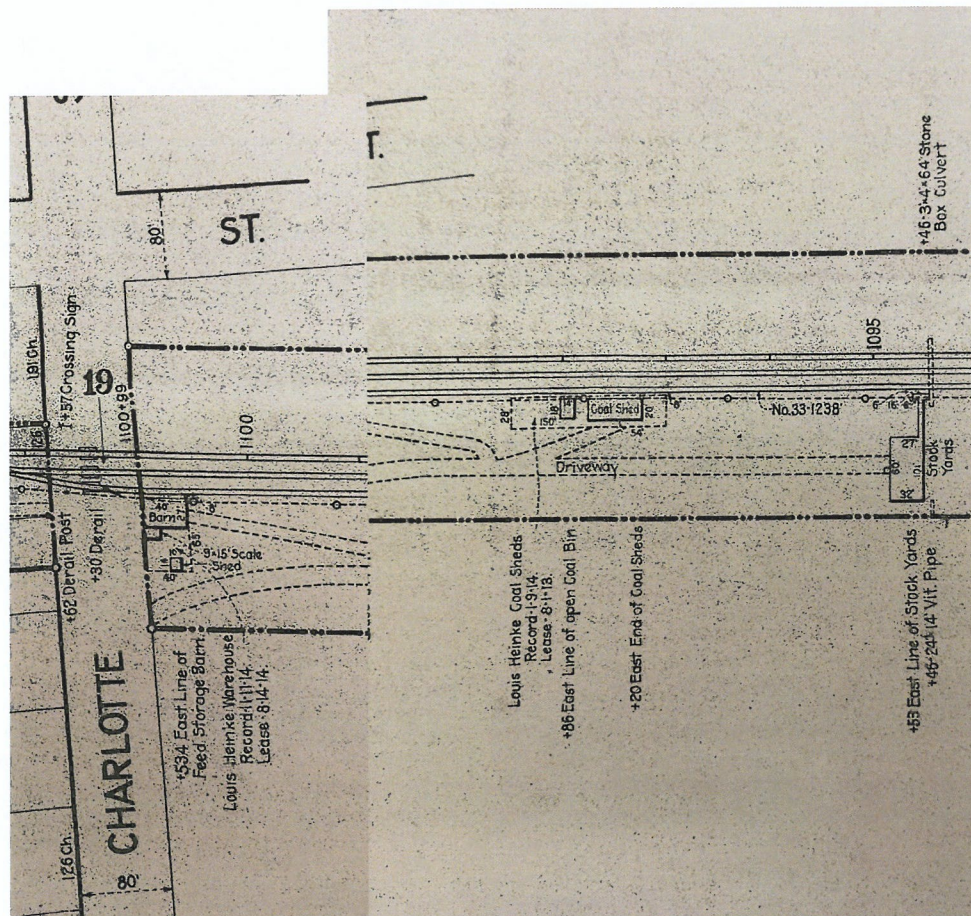


**At Charlotte:**

1. Picture of Louis Heinke feed store on SE corner of Charlotte and CGW (Picture at LHS)



2. 1916 Map of CGW in Lombard. Louis Heineke's barn and warehouse, coal sheds, and stock yards are shown on the map. (Photo is from copy at Regional History Center at NIU).



3. Photos of Alexander Lumber Company (Alexander bought out Louis Heineke)

Check with LHS to see if they have any pictures

4. Photo of old CGW car parked on the siding that was used as a home by the Hiskey family in the late 1940s and early 1950s. (Photo at LHS)



5. Map of Lombard sidings on CGW from "The Chicago Great Western DuPage County, Illinois" by David Fiore in *NorthWestern Lines*, Vol. 16, No. 3, Summer 1989.

